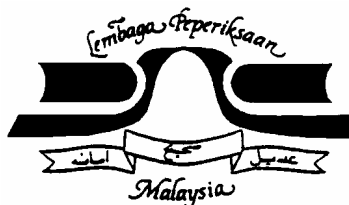


**SIJIL PELAJARAN MALAYSIA  
INFORMATION AND  
COMMUNICATION TECHNOLOGY  
(3765/2)**

---

**COURSEWORK ASSESSMENT  
MANUAL FOR ICT**



Lembaga Peperiksaan Malaysia  
Kementerian Pelajaran Malaysia  
Jalan Duta  
50605 Kuala Lumpur

# CONTENTS

<b>SECTION A – GENERAL INFORMATION</b>		<b>PAGE</b>
1.0	Introduction.....	1
2.0	General Information.....	1-2
3.0	Information For The Assessor.....	3
4.0	Information For The Internal Verifier.....	3
5.0	Information For The External Verifier.....	4
6.0	Information For Candidates.....	4
7.0	Assessed Constructs, Aspects And Values.....	4-6
	7.1 Constructs	
	7.2 Aspects	
	7.3 Values	
8.0	Assessment.....	6-8
	8.1 Approach	
	8.2 Assessor	
	8.3 Aspects	
	8.4 Duration	
	8.5 Assessment Forms	
	8.6 Assessment Procedure	
9.0	Submission.....	9
	9.1 Evidence	
	9.2 Deadline	
	9.3 Verification	
10.0	Documentation.....	10
	10.1 Coursework Portfolio	
11.0	Types of Instrument.....	10-11
	11.1 Demonstration	

# CONTENTS

	<b>PAGE</b>
11.2 Verbal Presentation	
11.3 Written Assignment	
11.4 Project	
11.5 Practical Session	
11.6 Scrapbook	
11.7 Report	
12.0 Tables Of Constructs, Aspects and Criteria.....	11
 <b>SECTION B – ASSESSMENT ACTIVITY</b>	
Table of Construct (TOC.CW.LA1.S01.1).....	12-13
(ACF.CW.LA1.S01.1).....	14
 Table of Construct (TOC.CW.LA1.S01.2).....	 15
(ACF.CW.LA1.S01.2).....	16
 Table of Construct (TOC.CW.LA1.S02.1).....	 17-18
(ACF.CW.LA1.S02.1).....	19
 Table of Construct (TOC.CW.LA2.S03.1).....	 20-21
(ACF.CW.LA2.S03.1).....	22

# CONTENTS

Table of Construct	
(TOC.CW.LA2.S04.1).....	23
(ACF.CW.LA2.S04.1).....	24
Table of Construct	25-26
(TOC.CW.LA2.S05.1).....	27
(WAF.CW.LA2.S05.1).....	28
(ACF.CW.LA2.S05.1).....	
Table of Construct	
(TOC.CW.LA3.S06.1).....	29-30
(ACF.CW.LA3.S06.1).....	31
Table of Construct	
(TOC.CW.LA3.S06.2).....	32
(ACF.CW.LA3.S06.2).....	33
Table of Construct	
(TOC.CW.LA3.S07.1).....	34-35
(WAF.CW.LA3.S07.1).....	36
(ACF.CW.LA3.S07.1).....	37
Table of Construct	38-40
(TOC.CW.LA4.S08.1).....	41-42
(RF.CW.LA4.S08.1).....	43-44
(ACF.CW.LA4.S08.1).....	
Table of Construct	
(TOC.CW.LA4.S09.1).....	45-46
(RF.CW.LA4.S09.1).....	47
(ACF.CW.LA4.S09.1).....	48

# CONTENTS

Table of Construct	49-51
(TOC.CW.LA5.S10.1).....	52-53
(RF.CW.LA5.S10.1).....	54-55
(ACF.CW.LA5.S10.1).....	
Table of Construct	
(TOC.CW.LA5.S11.1).....	56
(RF.CW.LA5.S11.1).....	57
(ACF.CW.LA5.S11.1).....	58
Table of Construct	
(TOC.CW.LA6.S12.1).....	59-60
(RF.CW.LA6.S12.1).....	61
(ACF.CW.LA6.S12.1).....	62
Table of Construct	
(TOC.CW.LA6.S13.1).....	63
(RF.CW.LA6.S13.1).....	64
(ACF.CW.LA6.S13.1).....	65

## **SECTION C - OPERATION ADMINISTRATION**

13.0	Administration	66-67
13.1	General Administration	68
13.2	Administration of Recording Assessment	69
13.3	Task and Responsibility of the Principal	69
13.4	Task and Responsibility of Assessor/Internal Assessor	69
13.5	Task and Responsibility of the Candidate	70

# CONTENTS

13.6	Task and Responsibility of the Coordinator	70
13.7	Task and Responsibility of the Examination's Inspector	70
13.8	Task and Responsibility of the State Education Department	71
<b>SECTION D - SCORING</b>		
14.0	Scoring System.....	72
<b>APPENDICES</b>		
	Cover page (CWP).....	vi-viii
	Record of Submission (ROS).....	ix
	Individual Score Form (ISF).....	x
	Batch Score Form (BSF).....	xi
	Sample questions LA5.S10.1.....	xii-xiii
	Sample questions LA6.S12.1.....	xiv-xv
	Example ACF Form	xvi-xvii

**SECTION A**  
GENERAL INFORMATION

# COURSEWORK ASSESSMENT MANUAL

## 1.0 INTRODUCTION

In line with the implementation of the teaching and learning of Science and Technology subjects in English, the Curriculum Development Centre (CDC) introduced Information and Communication Technology (ICT) as a subject in 2006.

This subject is offered as an elective subject to candidates who are taking the Sijil Pelajaran Malaysia (SPM) examination.

The Malaysia Examinations Syndicate designed the assessment instruments based on the syllabus released by the Curriculum Development Centre (CDC). The development of these assessment instruments is based on the standard table of specification to maintain the quality and standard, as well as the validity and the reliability of these test scores.

This coursework assessment document contains guidelines, procedures and assessment forms for the implementation and assessment of the coursework to be carried at school level.

## 2.0 GENERAL INFORMATION

- 2.1 This assessment document for ICT coursework must be made known to all candidates when they are in Form 4.
- 2.2 Coursework assessment must be completed within the stipulated time set by the Malaysia Examinations Syndicate.
- 2.3 This coursework is based on six learning areas:

Learning Area	Construct	Aspect
1	S01	LA1.S01.1 Apply correct security procedures using antivirus.
	S01	LA1.S01.2 Apply correct security procedures using anti-spyware.
	S02	LA1.S02.1 Locate and present information on the impact of ICT on society.

<b>Learning Area</b>	<b>Construct</b>	<b>Aspect</b>
2	S03	LA2.S03.1 Assemble the components of a personal computer (PC).
	S04	LA2.S04.1 Install an operating system, application software and utility programs.
	S05	LA2.S05.1 Explain the latest open source software available and the latest development in ICT.
3	S06	LA3.S06.1 Crimp and test UTP cables.
	S06	LA3.S06.2 Configure and test network.
	S07	LA3.S07.1 Describe the latest development in networks and communications.
4	S08	LA4.S08.1 Apply all the phases of multimedia production to produce an interactive educational multimedia project.
	S09	LA4.S09.2 Gather examples of immersive multimedia in education, business or entertainment.
5	S10	LA5.S10.1 Apply program development phases to develop a problem-solving program.
	S11	LA5.S11.1 Find out the latest programming languages.
6	S12	LA6.S12.2 Develop a database project.
	S13	LA6.S13.1 Find out current developments in computer information systems.

2.4 Candidates are required to plan and carry out their coursework under the guidance and supervision of their assessors. Undue assistance from any other person.

2.5 Monitoring by external verifiers will be carried out within the duration during which the coursework is being implemented.

2.6 Assessors must verify candidates' coursework using appropriate forms provided. Schools must keep these forms for at least six months after the announcement of the SPM results.

2.7 All coursework must be kept according to procedure and specification.

- 2.8 Schools must provide a suitable place to keep the candidates' documents.
- 2.9 Schools are responsible to provide all the equipments and facilities necessary for the candidates to complete their coursework.

### **3.0 INFORMATION FOR THE ASSESSOR**

- 3.1 The ICT teacher(s) in the school will be the assessor(s).
- 3.2 The assessment must be carried out individually even though some of the practical works are carried out in groups.
- 3.3 Assessment can only be carried out when both candidate and assessor are ready.
- 3.4 The assessor should consider giving opportunities for candidates who request for re-assessment.
- 3.5 All the individual scores must be transferred to the Batch Score Form (BSF).

### **4.0 INFORMATION FOR THE INTERNAL VERIFIER**

The internal verifier must

- 4.1 be the principal or any person appointed by him/her.
- 4.2 verify the implementation of coursework on the Individual Score Form (ISF) and Batch Score Form (BSF).
- 4.3 ensure that all scores and documents which have been verified are kept in a safe place.
- 4.4 ensure that the coursework assessment process is implemented according to procedure. (Refer to 13.0 Operation/Administration)
- 4.5 ensure that the candidate's assessment portfolio is sent to the candidate's new school when he/she goes on transfer.

## **5.0 INFORMATION FOR THE EXTERNAL VERIFIER**

5.1 The task of the external verifier may be carried out by the Malaysia Examinations Syndicate officers, State Education Department representatives or Inspectorate officers.

## **6.0 INFORMATION FOR CANDIDATES**

6.1 All coursework must be done by the candidates themselves.

6.2 A candidate on transfer must ensure that the internal verifier sent his/her portfolio to the new school.

## **7.0 ASSESSED CONSTRUCTS, ASPECTS AND VALUES**

To achieve the Assessment Objective (AO), 13 constructs and 15 aspects will be assessed. Each construct may have one or more aspects. Values can be assessed implicitly or explicitly.

### **7.1 Constructs:**

- S01 - Computer Security Measures
- S02 - Impact of ICT on Society
- S03 - Personal Computer Assembling
- S04 - Software Installation
- S05 - Current and Future Development of Open Source Software and the Latest Development in ICT
- S06 - Network Facilities Setup
- S07 - Current and Future Development in Networks and Communications
- S08 - Multimedia Development
- S09 - Current and Future Development of Multimedia
- S10 - Program Development
- S11 - Current and Future Development of the Latest Programming Languages
- S12 - Database Development
- S13 - Current and Future Developments in Information Systems

## 7.2 Aspects :

CONSTRUCT	ASPECT	
S01	LA1.S01.1	Apply correct security procedures using antivirus
	LA1.S01.2	Apply correct security procedures using anti-spyware
S02	LA1.S02.1	Locate and present information on the impact of ICT on society.
S03	LA2.S03.1	Assemble the components of a personal computer.
S04	LA2.S04.1	Install an operating system, application software and utility programs
S05	LA2.S05.1	Explain the latest open source software available and the latest development in ICT
S06	LA3.S06.1	Crimp and test UTP cables
	LA3.S06.2	Configure and test network
S07	LA3.S07.1	Describe the latest development in networks and communications
S08	LA4.S08.1	Apply all the phases of multimedia production to produce an interactive educational multimedia project.
S09	LA4.S09.2	Gather examples of immersive multimedia in education, business or entertainment.
S10	LA5.S10.1	Apply program development phases to develop a problem-solving program.
S11	LA5.S11.1	Find out the latest programming languages.
S12	LA6.S12.2	Develop a database project.
S13	LA6.S13.1	Find out current developments in computer information systems.

### **7.3 Values :**

- 7.3.1 E01 Diligent
- 7.3.2 E02 Accurate
- 7.3.3 E03 Precise
- 7.3.4 E04 Confident
- 7.3.5 E05 Responsible
- 7.3.6 E06 Integrity
- 7.3.7 E07 Respect
- 7.3.8 E08 Cooperate
- 7.3.9 E09 Appreciate
- 7.3.10 E10 Abide
- 7.3.11 E11 Creative

## **8.0 ASSESSMENT**

### **8.1 Approach**

- 8.1.1 ICT teachers carry out coursework assessment.
- 8.1.2 Coursework assessment uses authentic testing approach.
- 8.1.3 Coursework assessment is an on-going process throughout the teaching and learning process. Assessment will be carried out when both parties (candidate and assessor) are prepared/ready within the stipulated time.
- 8.1.4 Re-assessment should be carried out to improve the performance score of any aspect.

## **8.2 Assessor**

8.2.1 The teacher's role as an assessor is to assess the performance of a candidate during assessment.

8.2.2 The assessor must prepare the assessment schedule agreed by both assessor and candidate.

8.2.3 The assessor is required to administer and manage scores and records.

8.2.4 During assessment, teaching and learning activities should not be carried out.

## **8.3 Aspects**

8.3.1 There are fifteen aspects to be assessed from six learning areas.

8.3.2 Nine aspects address the practical skills and six aspects address current and future development issues.

8.3.3 Each aspect comprises between three to eight criteria.

## **8.4 Duration**

8.4.1 All coursework must be completed by July of the examination year.

## **8.5 Assessment Forms**

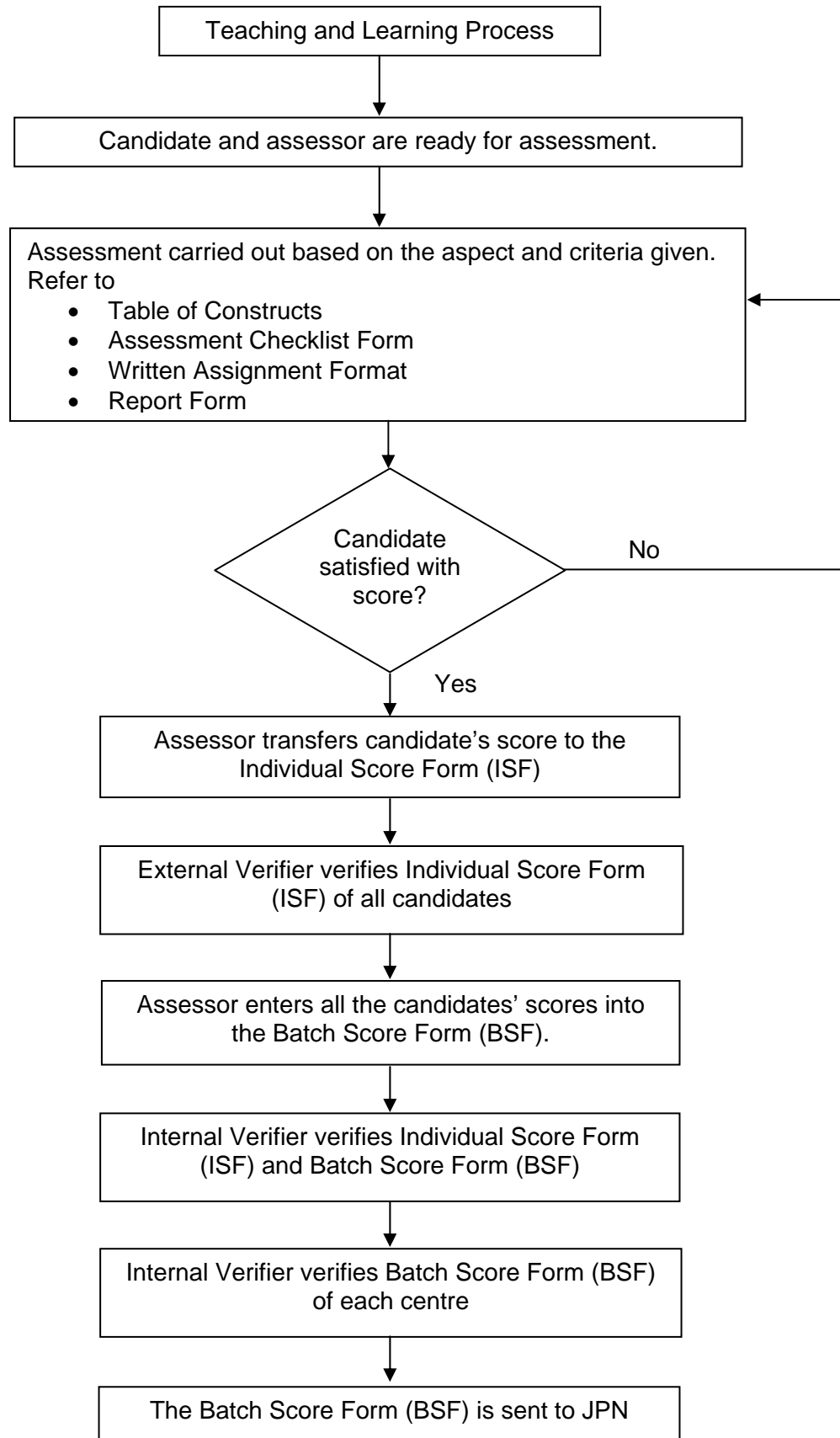
The assessor must fill the score for every aspect assessed in the following forms:

8.5.1 Assessment Checklist Form (ACF)

8.5.2 Individual Score Form (ISF)

8.5.3 Batch Score Form (BSF)

## 8.6 Assessment Procedure



NOTE: The scores for each candidate will be entered online by the Examination Secretary based on the Individual Score Form.

## **9.0 SUBMISSION**

### **9.1 Evidence**

- 9.1.1 Candidate must submit assessment checklist form (compiled in the coursework portfolio) to assessor.
- 9.1.2 Assessor must submit candidates' coursework portfolio and completed assessment forms ISF and BSF to the internal verifier.
- 9.1.3 Assessor must keep candidates' coursework portfolio in a safe place.

### **9.2 Deadline**

- 9.2.1 Candidate to assessor – 1<sup>st</sup> July of the examination year.
- 9.2.2 Assessor to internal verifier – 15<sup>th</sup> July of the examination year.
- 9.2.3 Internal verifier to UPP, JPN – instruction/directive from JPN.
- 9.2.4 Online entry of scores – 1 to 30<sup>th</sup> August of the examination year.

### **9.3 Verification**

- 9.3.1 The assessor must verify candidates' coursework using the provided forms for products and reports. (ACF, ISF, BSF)
- 9.3.2 The internal verifier must verify candidates' coursework using the provided forms for products and reports. (ISF, BSF)
- 9.3.3 The external verifier must verify candidates' coursework using the provided forms for products and reports. (ISF)

## **10.0 DOCUMENTATION**

### **10.1 Coursework Portfolio**

10.1.1 All coursework assessment documents and evidence must be compiled in a **RING FILE** and must be kept in a safe place.

10.1.2 The contents of the Coursework Portfolio must be arranged in the following order;

10.1.2.1 Cover Page

10.1.2.2 Record Of Submission

10.1.2.3 Assessment Checklist Form and corresponding written assignment or Report Form or other relevant documents if applicable for each aspect.

10.1.2.4 Crimped cables, scrapbook and CD containing soft copies of assessment evidence.

10.1.2.5 Table of Constructs

## **11.0 TYPES OF INSTRUMENT**

### **11.1 Demonstration**

Show how to scan, crimp, ping, install or assemble.

### **11.2 Verbal Presentation**

Present ideas/information in verbal/oral form.

### **11.3 Written Assignment**

Present ideas/information in written form.

### **11.4 Project**

Execute task(s) given and submit on or before the deadline specified.

### **11.5 Practical Session**

Complete task(s) under supervision within the duration allocated.

11.6 Scrapbook

Collect newspaper articles, pictures, etc. and stick in a book.

11.7 Report

Find relevant information from various sources and complete the given report form.

**12.0 TABLES OF CONSTRUCTS, ASPECTS AND CRITERIA**

The tables of constructs, aspects, and criteria (refer Section B) serve as a guide to teachers (assessors) and students (candidates) and should be made available to both parties. This information should be transparent to candidates but cannot be referred to by them during the assessment itself.



**SECTION B**  
**ASSESSMENT ACTIVITY**



**TABLE OF CONSTRUCT**

**Construct** : S01 Computer Security Measures  
**Aspect** : LA1.S01.1 Apply Correct Security Procedures Using Antivirus  
**Instrument** : Demonstration

SCORE	CRITERIA	EVIDENCE	NOTE
2	<ol style="list-style-type: none"> <li>1. Choose antivirus software to be used. Write the name of the antivirus software.</li> <li>2. Start the antivirus software and select area to be scanned. State the area selected.</li> <li>3. Scan the selected area. Copy scan summary.</li> <li>4. Choose and apply any or all of the following when virus is detected – delete/remove, clean/heal, quarantine/move to vault. State action taken.</li> </ol> <p><b>Complete all FOUR tasks.</b></p>	<p>Completed  <b>ACF.CW.LA1.S01.1.</b></p>	<p>Use any antivirus software available e.g. Kaspersky, McAfee Virus Scan, Norton Antivirus, Trend Micro PC-Cillin, Dr Solomon, AVG, etc.</p> <p>Scan area can be specific folder, floppy disk, or flash memory.</p> <p>Candidate can print screen the scan summary.</p> <p>If no virus is detected, criterion four is considered done. Write “No action taken”.</p> <p>Values:</p> <ul style="list-style-type: none"> <li>• Confident</li> <li>• Responsible</li> </ul>
1	<ol style="list-style-type: none"> <li>1. Choose antivirus software to be used. Write the name of the antivirus software.</li> <li>2. Start the antivirus software and select area to be scanned. State the area selected.</li> <li>3. Scan the selected area. Copy scan summary.</li> <li>4. Choose and apply any or all of the following when virus is detected – delete/remove, clean/heal, quarantine/move to vault. State action taken.</li> </ol> <p><b>Complete TWO to THREE tasks.</b></p>	<p>Completed  <b>ACF.CW.LA1.S01.1.</b></p>	<p>Use any antivirus software available e.g. Kaspersky, McAfee Virus Scan, Norton Antivirus, Trend Micro PC-Cillin, Dr Solomon, AVG, etc.</p> <p>Scan area can be specific folder, floppy disk, or flash memory.</p> <p>Candidate can print screen the scan summary.</p> <p>If no virus is detected, criterion four is considered done. Write “No action taken”.</p> <p>Values:</p> <ul style="list-style-type: none"> <li>• Confident</li> <li>• Responsible</li> </ul>

SCORE	CRITERIA	EVIDENCE	NOTE
<b>0</b>	<ol style="list-style-type: none"> <li>1. Choose antivirus software to be used. Write the name of the antivirus software.</li> <li>2. Start the antivirus software and select area to be scanned. State the area selected.</li> <li>3. Scan the selected area. Copy scan summary.</li> <li>4. Choose and apply any or all of the following when virus is detected – delete/remove, clean/heal, quarantine/move to vault. State action taken.</li> </ol> <p><b>Complete any ONE task.</b></p>	<p>Completed <b>ACF.CW.LA1.S01.1.</b></p>	<p>Use any antivirus software available e.g. Kaspersky, McAfee Virus Scan, Norton Antivirus, Trend Micro PC-Cillin, Dr Solomon, AVG, etc.</p> <p>Scan area can be specific folder, floppy disk, or flash memory.</p> <p>Candidate can print screen the scan summary.</p> <p>If no virus is detected, criterion four is considered done. Write "No action taken".</p> <p>Values:</p> <ul style="list-style-type: none"> <li>• Confident</li> <li>• Responsible</li> </ul>



**LEMBAGA PEPERIKSAAN  
KEMENTERIAN PELAJARAN MALAYSIA**

**ASSESSMENT CHECKLIST FORM**

LEARNING AREA: **INFORMATION AND COMMUNICATION TECHNOLOGY AND SOCIETY**

Name of Candidate	
IC No	
Index No	

**Construct** : S01 Computer Security Measures  
**Aspect** : LA1.S01.1 Apply Correct Security Procedures Using Antivirus  
**Instrument** : Demonstration  
**Assessment** : 1 / 2 / 3 / \_

No.	Criterion	Evidence (to be filled by candidate if necessary)	Assessor tick (✓) if completed	Remarks by assessor
1.	Choose antivirus software to be used. Write the name of the antivirus software.			
2.	Start the antivirus software and select area to be scanned. State the area selected.			
3.	Scan the selected area. Copy scan summary.			
4.	Choose and apply any or all of the following when virus is detected – delete/remove, clean/heal, quarantine/move to vault. State action taken.			
<b>SCORE</b>				

Candidate's Signature

Assessor's Signature

-----

-----

Name :

Date :

**TABLE OF CONSTRUCT**

**Construct** : S01 Computer Security Measures  
**Aspect** : LA1.S01.2 Apply Correct Security Procedures Using Anti-Spyware  
**Instrument** : Demonstration

SCORE	CRITERIA	EVIDENCE	NOTE
2	<ol style="list-style-type: none"> <li>Choose anti-spyware software to be used. Write the name of the anti-spyware software.</li> <li>Start the anti-spyware software and choose a scan mode. State the scan mode selected.</li> <li>Copy the scan summary.</li> <li>Choose and apply any of the following when spyware is detected - remove/quarantine the identified object(s). State the action taken.</li> </ol> <p><b>Complete all FOUR tasks.</b></p>	Completed <b>ACF.CW.LA1.S01.2</b>	<p>Suggested anti-spyware software: Lavasoft Ad-Aware SE Personal.</p> <p>Print screen can be used to display scan summary.</p> <p>If no spyware is detected, criterion four is considered done. Write "No action taken".</p> <p>Values:</p> <ul style="list-style-type: none"> <li>Confident</li> <li>Responsible</li> </ul>
1	<ol style="list-style-type: none"> <li>Choose anti-spyware software to be used. Write the name of the anti-spyware software.</li> <li>Start the anti-spyware software and choose a scan mode. State the scan mode selected.</li> <li>Copy the scan summary.</li> <li>Choose and apply any of the following when spyware is detected - remove/quarantine the identified object(s). State the action taken.</li> </ol> <p><b>Complete TWO to THREE tasks.</b></p>	Completed <b>ACF.CW.LA1.S01.2</b>	<p>Suggested anti-spyware software: Lavasoft Ad-Aware SE Personal.</p> <p>Print screen can be used to display scan summary.</p> <p>If no spyware is detected, criterion four is considered done. Write "No action taken".</p> <p>Values:</p> <ul style="list-style-type: none"> <li>Confident</li> <li>Responsible</li> </ul>
0	<ol style="list-style-type: none"> <li>Choose anti-spyware software to be used. Write the name of the anti-spyware software.</li> <li>Start the anti-spyware software and choose a scan mode. State the scan mode selected.</li> <li>Copy the scan summary.</li> <li>Choose and apply any of the following when spyware is detected - remove/quarantine the identified object(s). State the action taken.</li> </ol> <p><b>Complete any ONE task.</b></p>	Completed <b>ACF.CW.LA1.S01.2</b>	<p>Suggested anti-spyware software: Lavasoft Ad-Aware SE Personal.</p> <p>Print screen can be used to display scan summary.</p> <p>If no spyware is detected, criterion four is considered done. Write "No action taken".</p> <p>Values:</p> <ul style="list-style-type: none"> <li>Confident</li> <li>Responsible</li> </ul>



ACF.CW.LA1.S01.2

**LEMBAGA PEPERIKSAAN  
KEMENTERIAN PELAJARAN MALAYSIA**

**ASSESSMENT CHECKLIST FORM**

LEARNING AREA: **INFORMATION AND COMMUNICATION TECHNOLOGY AND SOCIETY**

Name of Candidate	
IC No	
Index No	

**Construct** : S01 Computer Security Measures  
**Aspect** : LA1.S01.2 Apply Correct Security Procedures Using Anti-Spyware  
**Instrument** : Demonstration  
**Assessment** : 1 / 2 / 3 / \_

No.	Criterion	Evidence (to be filled by candidate if necessary)	Assessor tick (✓) if completed	Remarks by assessor
1.	Choose anti-spyware software to be used. Write the name of the anti-spyware software.			
2.	Start the anti-spyware application and choose a scan mode. State the scan mode selected.			
3.	Copy the scan summary.			
4.	Choose and apply any of the following when spyware is detected - remove/quarantine the identified object(s). State the action taken.			
<b>SCORE</b>				

Candidate's Signature

Assessor's Signature

-----

-----

Name :

Date :

**TABLE OF CONSTRUCT**

**Construct** : S02 Impact of ICT on Society  
**Aspect** : LA1.S02.1 Locate and present information on impact of ICT on society  
**Instrument** : Verbal Presentation

SCORE	CRITERIA	EVIDENCE	NOTE
2	<ol style="list-style-type: none"> <li>1. Locate information from more than one source. Write the number of sources referred.</li> <li>2. Present the information in 5 to 10 slides. Write the number of slides used.</li> <li>3. Presentation includes:               <ol style="list-style-type: none"> <li>a. Topic</li> <li>b. Content</li> <li>c. Conclusion</li> <li>d. Sources of reference</li> </ol>               Submit a soft copy or hard copy of the presentation.             </li> <li>4. Display cooperation.               <ol style="list-style-type: none"> <li>a. Write the names of group members.</li> <li>b. Verbal verification from group members OR assessor's observation.</li> </ol> </li> </ol> <p><b>Complete all FOUR tasks.</b></p>	<p>Completed  <b>ACF.CW.LA1.S02.1</b>            AND            a soft copy and/or hard copy of the presentation.</p>	<p>Candidates locate information in groups of 2 – 4 but must prepare and present slides <b>individually</b>.</p> <p>Source of information can be from websites, books, magazines or newspapers etc.</p> <p>Choose <b>ONE</b> of the following topics:</p> <ol style="list-style-type: none"> <li>1. Copyright and Piracy from Moral and Legal Standpoints.</li> <li>2. Lack of Security and its Effects on Industry/Economy/ Government.</li> <li>3. Malaysian Cyber Law, Electronic Government Law.</li> <li>4. Phishing</li> <li>5. Virus (Trojan Horse, Salami Attack)</li> <li>6. Hacking</li> <li>7. Security Measures (Biometrics, Authentication)</li> </ol> <p>Suggested presentation duration: 5 minutes</p> <p>Values:</p> <ul style="list-style-type: none"> <li>• Cooperate</li> <li>• Responsible</li> </ul>
1	<ol style="list-style-type: none"> <li>1. Locate information from more than one source. Write the number of sources referred.</li> <li>2. Present the information in 5 to 10 slides. Write the number of slides used.</li> <li>3. Presentation includes:               <ol style="list-style-type: none"> <li>a. Topic</li> <li>b. Content</li> <li>c. Conclusion</li> <li>d. Sources of reference</li> </ol>               Submit a soft copy or hard copy of the             </li> </ol>	<p>Completed  <b>ACF.CW.LA1.S02.1</b>            AND            a soft copy and/or hard copy of the presentation.</p>	<p>Candidates locate information in groups of 2 – 4 but must prepare and present slides <b>individually</b>.</p> <p>Source of information can be from websites, books, magazines or newspapers etc.</p> <p>Choose <b>ONE</b> of the following topics:</p> <ol style="list-style-type: none"> <li>1. Copyright and Piracy from Moral and Legal Standpoints.</li> <li>2. Lack of Security and its Effects on Industry/Economy/ Government.</li> <li>3. Malaysian Cyber Law, Electronic Government Law.</li> <li>4. Phishing</li> </ol>

SCORE	CRITERIA	EVIDENCE	NOTE
	<p>presentation.</p> <p>4. Display cooperation.</p> <ol style="list-style-type: none"> <li>Write the names of group members.</li> <li>Verbal verification from group members OR assessor's observation.</li> </ol> <p><b>Complete TWO to THREE tasks.</b></p>		<ol style="list-style-type: none"> <li>Virus (Trojan Horse, Salami Attack)</li> <li>Hacking</li> <li>Security Measures (Biometrics, Authentication)</li> </ol> <p>Suggested presentation duration: 5 minutes</p> <p>Values:</p> <ul style="list-style-type: none"> <li>Cooperate</li> <li>Responsible</li> </ul>
0	<ol style="list-style-type: none"> <li>Locate information from more than one source. Write the number of sources referred.</li> <li>Present the information in 5 to 10 slides. Write the number of slides used.</li> <li>Presentation includes: <ol style="list-style-type: none"> <li>Topic</li> <li>Content</li> <li>Conclusion</li> <li>Sources of reference</li> </ol> Submit a soft copy or hard copy of the presentation. </li> <li>Display cooperation. <ol style="list-style-type: none"> <li>Write the names of group members.</li> <li>Verbal verification from group members OR assessor's observation.</li> </ol> </li> </ol> <p><b>Complete any ONE task.</b></p>	<p>Completed <b>ACF.CW.LA1.S02.1</b> AND a soft copy and/or hard copy of the presentation.</p>	<p>Candidates locate information in groups of 2 – 4 but must prepare and present slides <b>individually</b>.</p> <p>Source of information can be from websites, books, magazines or newspapers etc.</p> <p>Choose <b>ONE</b> of the following topics:</p> <ol style="list-style-type: none"> <li>Copyright and Piracy from Moral and Legal Standpoints.</li> <li>Lack of Security and its Effects on Industry/Economy/ Government.</li> <li>Malaysian Cyber Law, Electronic Government Law.</li> <li>Phishing</li> <li>Virus (Trojan Horse, Salami Attack)</li> <li>Hacking</li> <li>Security Measures (Biometrics, Authentication)</li> </ol> <p>Suggested presentation duration: 5 minutes</p> <p>Values:</p> <ul style="list-style-type: none"> <li>Cooperate</li> <li>Responsible</li> </ul>



ACF.CW.LA1.S02.1

**LEMBAGA PEPERIKSAAN  
KEMENTERIAN PELAJARAN MALAYSIA**

**ASSESSMENT CHECKLIST FORM**

**LEARNING AREA: INFORMATION AND COMMUNICATION TECHNOLOGY AND SOCIETY**

Name of Candidate	
IC No	
Index No	

**Construct** : S02 Impact of ICT on Society  
**Aspect** : LA1.S02.1 Locate and present information on impact of ICT on society  
**Instrument** : Verbal Presentation  
**Assessment** : 1 / 2 / 3 / \_

No.	Criterion	Evidence (to be filled by candidate if necessary)	Assessor tick (✓) if completed	Remarks by assessor
1.	Locate information from more than one source. Write the number of sources referred.			
2.	Present the information in 5 to 10 slides. Write the number of slides used.			
3.	Presentation includes: a. Topic b. Content c. Conclusion d. Sources of reference Submit a soft copy <b>OR</b> hard copy of the presentation.			
4.	Display cooperation. a. Write the names of group members. b. Verbal verification from group members or assessor's observation.			
<b>SCORE</b>				

Candidate's Signature

Assessor's Signature

-----

-----

Name :

Date :

**TABLE OF CONSTRUCT**

**Construct** : S03 PC Assembling  
**Aspect** : LA2.S03.1 Assemble the components of a PC  
**Instrument** : Demonstration

SCORE	CRITERIA	EVIDENCE	NOTE
2	<ol style="list-style-type: none"> <li>1. Fix the processor correctly. Write processor specification.</li> <li>2. Fix the RAM correctly. Write RAM capacity.</li> <li>3. Install the power supply unit correctly. Write power (W) and voltage (V) of unit.</li> <li>4. Install the hard disk correctly. Write hard disk capacity.</li> <li>5. Install the floppy drive AND/OR optical drive correctly. Write drive(s) installed.</li> <li>6. Boot up the computer successfully.</li> <li>7. Check BIOS setup.               <ol style="list-style-type: none"> <li>a. Hard disk detected</li> <li>b. Floppy drive AND/OR optical drive detected</li> </ol> </li> </ol> <p><b>Complete all SEVEN tasks.</b></p>	<p style="text-align: center;">Completed  <b>ACF.CW.LA2.S03.1</b></p>	<p><b>CAUTION:</b>            Assessor must make sure that the processor is properly fixed by the candidate to avoid permanent damage to it.</p> <p>Installation of floppy drive OR optical drive is required if and only if they come with the PC.</p> <p>Candidates must connect all necessary cables.</p> <p>Values:</p> <ul style="list-style-type: none"> <li>• Accurate</li> <li>• Confident</li> <li>• Responsible</li> </ul>

<b>1</b>	<ol style="list-style-type: none"> <li>1. Fix the processor correctly. Write processor specification.</li> <li>2. Fix the RAM correctly. Write RAM capacity.</li> <li>3. Install the power supply unit correctly. Write power (W) and voltage (V) of unit.</li> <li>4. Install the hard disk correctly. Write hard disk capacity.</li> <li>5. Install the floppy drive AND/OR optical drive correctly. Write drive(s) installed.</li> <li>6. Boot up the computer successfully.</li> <li>7. Check BIOS setup. <ol style="list-style-type: none"> <li>a. Hard disk detected</li> <li>b. Floppy drive AND/OR optical drive detected</li> </ol> </li> </ol> <p><b>Complete TWO to SIX tasks.</b></p>	<p>Completed <b>ACF.CW.LA2.S03.1</b></p>	<p><b>CAUTION:</b> Assessor must make sure that the processor is properly fixed by the candidate to avoid permanent damage to it.</p> <p>Installation of floppy drive OR optical drive is required if and only if they come with the PC.</p> <p>Candidates must connect all necessary cables.</p> <p>Values:</p> <ul style="list-style-type: none"> <li>• Accurate</li> <li>• Confident</li> <li>• Responsible</li> </ul>
<b>0</b>	<ol style="list-style-type: none"> <li>1. Fix the processor correctly. Write processor specification.</li> <li>2. Fix the RAM correctly. Write RAM capacity.</li> <li>3. Install the power supply unit correctly. Write power (W) and voltage (V) of unit.</li> <li>4. Install the hard disk correctly. Write hard disk capacity.</li> <li>5. Install the floppy drive AND/OR optical drive correctly. Write drive(s) installed.</li> <li>6. Boot up the computer successfully.</li> <li>7. Check BIOS setup. <ol style="list-style-type: none"> <li>a. Hard disk detected</li> <li>b. Floppy drive AND/OR optical drive detected</li> </ol> </li> </ol> <p><b>Complete any ONE task.</b></p>	<p>Completed <b>ACF.CW.LA2.S03.1</b></p>	<p><b>CAUTION:</b> Assessor must make sure that the processor is properly fixed by the candidate to avoid permanent damage to it.</p> <p>Installation of floppy drive OR optical drive is required if and only if they come with the PC.</p> <p>Candidates must connect all necessary cables.</p> <p>Values:</p> <ul style="list-style-type: none"> <li>• Accurate</li> <li>• Confident</li> <li>• Responsible</li> </ul>



**LEMBAGA PEPERIKSAAN  
KEMENTERIAN PELAJARAN MALAYSIA**

**ASSESSMENT CHECKLIST FORM**

LEARNING AREA : **COMPUTER SYSTEM**

Name of Candidate	
IC No	
Index No	

**Construct** : S03 PC Assembling  
**Aspect** : LA2.S03.1 Assemble the components of a PC  
**Instrument** : Demonstration  
**Assessment** : 1 / 2 / 3 / \_

No.	Criterion	Evidence (to be filled by candidate if necessary)	Assessor tick (✓) if completed	Remarks by assessor
1.	Fix the processor correctly. Write processor specification.			
2.	Fix the RAM correctly. Write RAM capacity.			
3.	Install the power supply unit correctly. Write power (w) and voltage (V) of unit.			
4.	Install the hard disk correctly. Write hard disk capacity.			
5.	Install the floppy drive AND/OR optical drive correctly. Write drive(s) installed.			
6.	Boot up of the computer successfully.			
7.	Check BIOS setup : a. hard disk detected b. floppy drive AND/OR optical drive detected			
<b>SCORE</b>				

Candidate's Signature

Assessor's Signature

-----

-----

Name :  
Date :

**TABLE OF CONSTRUCT**

**TOC.CW.LA2.S04.1**

**Construct** : S04 Software Installation  
**Aspect** : LA2.S04.1 Install operating system, application software and utility program  
**Instrument** : Demonstration

SCORE	CRITERIA	EVIDENCE	NOTE
2	1. Install an operating system. Write the name of the operating system installed. 2. Install application software. Write the name of the application software installed. 3. Install a utility program. Write the name of the utility program installed. <b>Complete all THREE tasks.</b>	Completed <b>ACF.CW.LA2.S04.1</b>	Examples of operating systems: <ul style="list-style-type: none"> <li>• Windows</li> <li>• Linux</li> <li>• MacOS</li> </ul> Examples of application software: <ul style="list-style-type: none"> <li>• MS Office</li> <li>• Visual Basic</li> <li>• Toolbook</li> </ul> Examples of Utility Programs: <ul style="list-style-type: none"> <li>• AVG</li> <li>• Lavasoft Ad-Aware</li> <li>• WinZip</li> </ul> Values: <ul style="list-style-type: none"> <li>• Confident</li> <li>• Responsible</li> </ul>
1	1. Install an operating system. Write the name of the operating system installed. 2. Install application software. Write the name of the application software installed. 3. Install a utility program. Write the name of the utility program installed. <b>Complete TWO tasks.</b>	Completed <b>ACF.CW.LA2.S04.1</b>	Examples of operating systems: <ul style="list-style-type: none"> <li>• Windows</li> <li>• Linux</li> <li>• MacOS</li> </ul> Examples of application software: <ul style="list-style-type: none"> <li>• MS Office</li> <li>• Visual Basic</li> <li>• Toolbook</li> </ul> Examples of Utility Programs: <ul style="list-style-type: none"> <li>• AVG</li> <li>• Lavasoft Ad-Aware</li> <li>• WinZip</li> </ul> Values: <ul style="list-style-type: none"> <li>• Confident</li> <li>• Responsible</li> </ul>
0	1. Install an operating system. Write the name of the operating system installed. 2. Install application software. Write the name of the application software installed. 3. Install a utility program. Write the name of the utility program installed. <b>Complete any ONE task.</b>	Completed <b>ACF.CW.LA2.S04.1</b>	Examples of operating systems: <ul style="list-style-type: none"> <li>• Windows</li> <li>• Linux</li> <li>• MacOS</li> </ul> Examples of application software: <ul style="list-style-type: none"> <li>• MS Office</li> <li>• Visual Basic</li> <li>• Toolbook</li> </ul> Examples of Utility Programs: <ul style="list-style-type: none"> <li>• AVG</li> <li>• Lavasoft Ad-Aware</li> <li>• WinZip</li> </ul> Values: <ul style="list-style-type: none"> <li>• Confident</li> <li>• Responsible</li> </ul>



**LEMBAGA PEPERIKSAAN  
KEMENTERIAN PELAJARAN MALAYSIA**

**ASSESSMENT CHECKLIST FORM**

LEARNING AREA : **COMPUTER SYSTEM**

Name of Candidate	
IC No	
Index No	

**Construct** : S04 Software Installation  
**Aspect** : LA2.S04.1 Install operating system, application software and utility program  
**Instrument** : Demonstration  
**Assessment** : 1 / 2 / 3 / \_

No.	Criterion	Evidence (to be filled by candidate if necessary)	Assessor tick (✓) if completed	Remarks by assessor
1.	Install an operating system. Write the name of the operating system installed.			
2.	Install application software. Write the name of the application software installed.			
3.	Install a utility program. Write the name of the utility program installed.			
<b>SCORE</b>				

Candidate's Signature

Assessor's Signature

-----  
Name :

Date :

**TABLE OF CONSTRUCT**

**Construct** : S05 Current and Future Development of Open Source Software and Latest Development in ICT  
**Aspect** : LA2.S05.1 Explain the latest open source software available and the latest development in ICT  
**Instrument** : Written Assignment

SCORE	CRITERIA	EVIDENCE	NOTE
<b>2</b>	1. Explain the latest open source OS a. Meaning b. TWO examples 2. Explain the latest open source application software a. Meaning b. TWO examples 3. Explain the latest development in ICT a. ONE hardware b. ONE software 4. Explain pervasive computing a. Meaning b. TWO examples 5. Follow required written assignment format: a. content format b. document format 6. Display cooperation. a. Write the names of group members. b. Verbal verification from group members or assessor’s observation.  <b>Complete all SIX tasks.</b>	Written Assignment	Candidate works in groups of 2 to 4 to conduct study AND/OR for discussion.  Written assignment MUST be done individually.  Refer to WAF.CW.LA2.S05.1 .  Suggested duration: 2 to 4 weeks  Values: • Appreciate • Cooperate • Confident
<b>1</b>	1. Explain the latest open source OS a. Meaning b. TWO examples 2. Explain the latest open source application software a. Meaning b. TWO examples 3. Explain the latest development in ICT a. ONE hardware b. ONE software 4. Explain pervasive computing a. Meaning b. TWO examples 5. Follow required written assignment format: a. content format b. document format 6. Display cooperation. a. Write the names of group members.	Written Assignment	Candidate works in groups of 2 to 4 to conduct study AND/OR for discussion.  Written assignment MUST be done individually.  Refer to Appendix WAF.CW.LA2.S05.1 .  Suggested duration: 2 to 4 weeks  Values:

	<p>b. Verbal verification from group members or assessor's observation.</p> <p><b>Complete TWO to FIVE tasks.</b></p>		<ul style="list-style-type: none"> <li>• Appreciate</li> <li>• Cooperate</li> <li>• Confident</li> </ul>
<b>0</b>	<ol style="list-style-type: none"> <li>1. Explain the latest open source OS <ol style="list-style-type: none"> <li>a. Meaning</li> <li>b. TWO examples</li> </ol> </li> <li>2. Explain the latest open source application software <ol style="list-style-type: none"> <li>a. Meaning</li> <li>b. TWO examples</li> </ol> </li> <li>3. Explain the latest development in ICT <ol style="list-style-type: none"> <li>a. ONE hardware</li> <li>b. ONE software</li> </ol> </li> <li>4. Explain pervasive computing <ol style="list-style-type: none"> <li>a. Meaning</li> <li>b. TWO examples</li> </ol> </li> <li>5. Follow required written assignment format: <ol style="list-style-type: none"> <li>a. content format</li> <li>b. document format</li> </ol> </li> <li>6. Display cooperation. <ol style="list-style-type: none"> <li>a. Write the names of group members.</li> <li>b. Verbal verification from group members or assessor's observation.</li> </ol> </li> </ol> <p><b>Complete any ONE task.</b></p>	<p>Written Assignment</p>	<p>Candidate works in groups of 2 to 4 to conduct study AND/OR for discussion.</p> <p>Written assignment MUST be done individually.</p> <p>Refer to Appendix WAF.CW.LA2.S05.1.</p> <p>Suggested duration: 2 to 4 weeks</p> <p>Values:</p> <ul style="list-style-type: none"> <li>• Appreciate</li> <li>• Cooperate</li> <li>• Confident</li> </ul>

## WRITTEN ASSIGNMENT FORMAT

LEARNING AREA: **COMPUTER SYSTEM**

<b>Construct</b>	:	S05	Current and Future Development of Open Source Software and Latest Development in ICT
<b>Aspect</b>	:	LA2.S05.1	Explain the latest open source software available and the latest development in ICT
<b>Instrument</b>	:		Written Assignment

### Instruction:

Work in groups of two to four to find information and discuss on the latest open source software available and the latest development in ICT. Complete this written assignment **individually**. You are given two to four weeks to complete this assignment.

### Content Format

- 1.0 Introduction  
(meaning of open source software, hardware, software, etc)
- 2.0 The Latest Open Source Operating System (OS)
  - 2.1 Meaning of open source OS
  - 2.2 Examples of open source OS  
(explain two examples)
- 3.0 The Latest Open Source Application Software
  - 3.1 Meaning of open source application software
  - 3.2 Examples of open source application software  
(explain two examples)
- 4.0 The Latest Development in ICT
  - 4.1 Hardware  
(state specification **OR** special features of ONE hardware and compare it to previous model(s))
  - 4.2 Software  
(state year/date of release, special features of ONE software and compare it to previous version(s))
- 5.0 Pervasive Computing
  - 5.1 Meaning of pervasive computing
  - 5.2 Examples of pervasive computing  
(explain two examples)
- 6.0 Conclusion

### Reference

(give at least two sources of reference)

### Document Format

- cover page
  - Candidate's details
  - Title: The latest Open Source Software Available and the Latest Development in ICT
- page margin - top, bottom, left, and right: 1", paper size - A4
- line spacing - 1.5 lines
- typeface - Times New Roman, font size- - 12 pts (content), and 14 pts for title/heading
- number of pages - 3 to 10



**LEMBAGA PEPERIKSAAN  
KEMENTERIAN PELAJARAN MALAYSIA**

**ASSESSMENT CHECKLIST FORM**

LEARNING AREA : **COMPUTER SYSTEM**

Name of Candidate	
IC No	
Index No	

**Construct** : S05 Current and Future Development of Open Source Software and Latest Development in ICT

**Aspect** : LA2.S05.1 Explain the latest open source software available and the latest development in ICT

**Instrument** : Written Assignment

**Assessment** : 1 / 2 / 3 / \_

No.	Criterion	Evidence (to be filled by candidate if necessary)	Assessor tick (✓) if completed		Remarks by assessor
1.	Explain the latest open source OS a. Meaning b. TWO examples				
2.	Explain the latest open source application software a. Meaning b. TWO examples				
3.	Explain the latest development in ICT a. ONE hardware b. ONE software				
4.	Explain pervasive computing a. Meaning b. TWO examples				
5.	Follow required written assignment format a. content format b. document format				
6.	Display cooperation. a. Write the names of group members. b. Verbal verification from group members or assessor's observation.				
<b>SCORE</b>					

Candidate's Signature

Assessor's Signature

-----

-----

Name :

Date :

**TABLE OF CONSTRUCT**

**Construct** : S06 Network Facilities Setup  
**Aspect** : LA3.S06.1 Crimp and Test UTP Cables  
**Instrument** : Demonstration

SCORE	CRITERIA	EVIDENCE	NOTE
2	<ol style="list-style-type: none"> <li>1. Crimp a Straight Cable               <ol style="list-style-type: none"> <li>a. Skin off the cable jacket.</li> <li>b. Untwist and straighten each wire.</li> <li>c. Arrange the wires according to the 568B wiring schematic order for both ends.</li> <li>d. Cut and insert the wires into a RJ45 connector.</li> <li>e. Crimp the cable using a crimping tool.</li> </ol> </li> <li>2. Check the straight cable is crimped successfully using a cable tester.</li> <li>3. Crimp a Crossed Cable               <ol style="list-style-type: none"> <li>a. Skin off the cable jacket.</li> <li>b. Untwist and straighten each wire.</li> <li>c. Arrange the wires according to the 568A wiring schematic order for one end AND 568B wiring schematic order for the other end.</li> <li>d. Cut and insert the wires into a RJ45 connector.</li> <li>e. Crimp the cable using a crimping tool.</li> </ol> </li> <li>4. Check the crossed cable is crimped successfully using a cable tester.</li> </ol> <p><b>Complete all FOUR tasks.</b></p>	<p>Crimped straight and crossed cables.</p>	<p>At least 1 meter of UTP cable is recommended.</p> <p>Candidate may refer to the wiring schematic manual in the Learning Module.</p> <p>The cables must be labelled and kept in a safe place</p> <p>Values:</p> <ul style="list-style-type: none"> <li>• Precise</li> <li>• Confident</li> <li>• Abide</li> </ul>
1	<ol style="list-style-type: none"> <li>1. Crimp a Straight Cable               <ol style="list-style-type: none"> <li>a. Skin off the cable jacket.</li> <li>b. Untwist and straighten each wire.</li> <li>c. Arrange the wires according to the 568B wiring schematic order for both ends.</li> <li>d. Cut and insert the wires into a RJ45 connector.</li> <li>e. Crimp the cable using a crimping tool.</li> </ol> </li> <li>2. Check the straight cable is crimped successfully using a cable tester.</li> <li>3. Crimp a Crossed Cable               <ol style="list-style-type: none"> <li>a. Skin off the cable jacket.</li> <li>b. Untwist and straighten each wire.</li> <li>c. Arrange the wires according to the 568A wiring schematic order for one end AND 568B wiring schematic order for the other end.</li> <li>d. Cut and insert the wires into a RJ45 connector.</li> <li>e. Crimp the cable using a crimping tool.</li> </ol> </li> <li>4. Check the crossed cable is crimped successfully using a cable tester.</li> </ol> <p><b>Complete TWO to THREE tasks.</b></p>	<p>Crimped straight and crossed cables.</p>	<p>At least 1 meter of UTP cable is recommended.</p> <p>Candidate may refer to the wiring schematic manual in the Learning Module.</p> <p>The cables must be labelled and kept in a safe place</p> <p>Values:</p> <ul style="list-style-type: none"> <li>• Precise</li> <li>• Confident</li> <li>• Abide</li> </ul>

SCORE	CRITERIA	EVIDENCE	NOTE
0	<ol style="list-style-type: none"> <li>1. Crimp a Straight Cable               <ol style="list-style-type: none"> <li>a. Skin off the cable jacket.</li> <li>b. Untwist and straighten each wire.</li> <li>c. Arrange the wires according to the 568B wiring schematic order for both ends.</li> <li>d. Cut and insert the wires into a RJ45 connector.</li> <li>e. Crimp the cable using a crimping tool.</li> </ol> </li> <li>2. Check the straight cable is crimped successfully using a cable tester.</li> <li>3. Crimp a Crossed Cable               <ol style="list-style-type: none"> <li>a. Skin off the cable jacket.</li> <li>b. Untwist and straighten each wire.</li> <li>c. Arrange the wires according to the 568A wiring schematic order for one end AND 568B wiring schematic order for the other end.</li> <li>d. Cut and insert the wires into a RJ45 connector.</li> <li>e. Crimp the cable using a crimping tool.</li> </ol> </li> <li>4. Check the crossed cable is crimped successfully using a cable tester.</li> </ol> <p><b>Complete any ONE task.</b></p>	Crimped straight and crossed cables.	<p>At least 1 meter of UTP cable is recommended.</p> <p>Candidate may refer to the wiring schematic manual in the Learning Module.</p> <p>The cables must be labelled and kept in a safe place</p> <p>Values:</p> <ul style="list-style-type: none"> <li>• Precise</li> <li>• Confident</li> <li>• Abide</li> </ul>



**LEMBAGA PEPERIKSAAN  
KEMENTERIAN PELAJARAN MALAYSIA**

**ASSESSMENT CHECKLIST FORM**

LEARNING AREA : **COMPUTER NETWORKS AND COMMUNICATIONS**

Name of Candidate	
IC No	
Index No	

**Construct** : S06 Network Facilities Setup  
**Aspect** : LA3.S06.1 Crimp and Test UTP Cables  
**Instrument** : Demonstration  
**Assessment** : 1 / 2 / 3 / \_

No.	Criterion	Evidence (to be filled by candidate if necessary)	Assessor tick (✓) if completed	Remarks by assessor
1	Crimp a Straight Cable 5. Skin off the cable jacket. 6. Untwist and straighten each wire. 7. Arrange the wires according to the 568B wiring schematic order for both ends. 8. Cut and insert the wires into a RJ45 connector. 9. Crimp the cable using a crimping tool.		<input type="checkbox"/> <input type="checkbox"/> <input type="checkbox"/> <input type="checkbox"/> <input type="checkbox"/>	
2.	Check the straight cable is crimped successfully using a cable tester.		<input type="checkbox"/>	
3.	Crimp a Crossed Cable a. Skin off the cable jacket. b. Untwist and straighten each wire. c. Arrange the wires according to the 568A wiring schematic order for one end AND 568B wiring schematic order for the other end. d. Cut and insert the wires into a RJ45 connector. e. Crimp the cable using a crimping tool.		<input type="checkbox"/> <input type="checkbox"/> <input type="checkbox"/> <input type="checkbox"/> <input type="checkbox"/>	
4.	Check the crossed cable is crimped successfully using a cable tester.		<input type="checkbox"/>	
<b>SCORE</b>				

Candidate's Signature

Assessor's Signature

-----

-----

Name :

Date :

**TABLE OF CONSTRUCT**

**Construct** : S06 Network Facilities Setup  
**Aspect** : LA3.S06.2 Configure and Test Network Connection  
**Instrument** : Demonstration

SCORE	CRITERIA	EVIDENCE	NOTE
2	<ol style="list-style-type: none"> <li>Set an IP Address. Write the IP address.</li> <li>Set a Subnet Mask. Write the subnet mask.</li> <li>Choose another computer to test the configuration. Write the IP address of the computer.</li> <li>Ping the other computer. Copy the ping result.</li> </ol> <p><b>Complete all FOUR tasks.</b></p>	<p>Completed <b>ACF.CW.LA3.S06.2</b></p>	<p>IP Address and Subnet Mask given by the assessor.</p> <p>Values:</p> <ul style="list-style-type: none"> <li>accurate</li> <li>confident</li> <li>responsible</li> <li>abide</li> </ul>
1	<ol style="list-style-type: none"> <li>Set an IP Address. Write the IP address.</li> <li>Set a Subnet Mask. Write the subnet mask.</li> <li>Choose another computer to test the configuration. Write the IP address of the computer.</li> <li>Ping the other computer. Copy the ping result.</li> </ol> <p><b>Complete TWO to THREE tasks.</b></p>	<p>Completed <b>ACF.CW.LA3.S06.2</b></p>	<p>IP Address and Subnet Mask given by the assessor.</p> <p>Values:</p> <ul style="list-style-type: none"> <li>accurate</li> <li>confident</li> <li>responsible</li> <li>abide</li> </ul>
0	<ol style="list-style-type: none"> <li>Set an IP Address. Write the IP address.</li> <li>Set a Subnet Mask. Write the subnet mask.</li> <li>Choose another computer to test the configuration. Write the IP address of the computer.</li> <li>Ping the other computer. Copy the ping result.</li> </ol> <p><b>Complete any ONE task.</b></p>	<p>Completed <b>ACF.CW.LA3.S06.2</b></p>	<p>IP Address and Subnet Mask given by the assessor.</p> <p>Values:</p> <ul style="list-style-type: none"> <li>accurate</li> <li>confident</li> <li>responsible</li> <li>abide</li> </ul>



**LEMBAGA PEPERIKSAAN  
KEMENTERIAN PELAJARAN MALAYSIA**

**ASSESSMENT CHECKLIST FORM**

LEARNING AREA : **COMPUTER NETWORKS AND COMMUNICATIONS**

Name of Candidate	
IC No	
Index No	

**Construct** : S06 Network Facilities Setup  
**Aspect** : LA3.S06.2 Configure and Test Network Connection  
**Instrument** : Demonstration  
**Assessment** : 1 / 2 / 3 / \_

No.	Criterion	Evidence (to be filled by candidate if necessary)	Assessor tick (✓) if completed	Remarks by assessor
1.	Set an IP address. Write the IP address.			
2.	Set a subnet mask. Write the subnet mask.			
3.	Choose another computer to test the configuration. Write the IP address of the computer.			
4.	Ping the other computer. Copy the ping result.			
<b>SCORE</b>				

Candidate's Signature

Assessor's Signature

-----

-----

Name :

Date :

**TABLE OF CONSTRUCT**

**Construct** : S07 Current and Future Development in Networks and Communications.  
**Aspect** : LA3.S07.1 Describe the Latest Development in Networks and Communications  
**Instrument** : Written Assignment

SCORE	CRITERIA	EVIDENCE	NOTE
<b>2</b>	<ol style="list-style-type: none"> <li>1. Describe Mobile Computing (specifications, services, frequencies).</li> <li>2. Describe Internet Technology and Services (VoIP, BLOG).</li> <li>3. Describe types of network (examples: PAN, VPN, WLAN, WIMAX).</li> <li>4. Follow required written assignment format:               <ol style="list-style-type: none"> <li>c. content format</li> <li>d. document format</li> </ol> </li> <li>5. Display cooperation.               <ol style="list-style-type: none"> <li>c. Write the names of group members.</li> <li>d. Verbal verification from group members or assessor's observation</li> </ol> </li> </ol> <p><b>Complete all FIVE tasks.</b></p>	Written Assignment	<p>Candidates work in groups of 2 to 4 to conduct the study and for discussion.</p> <p>Written assignment must be done <b>individually</b>. Suggested duration: 2 to 4 weeks</p> <p>Refer to Written Assignment Format in WAF.CW.LA3.S07.1</p> <p>Values:</p> <ul style="list-style-type: none"> <li>• cooperate</li> <li>• responsible</li> <li>• abide</li> </ul>
<b>1</b>	<ol style="list-style-type: none"> <li>1. Describe Mobile Computing (specifications, services, frequencies).</li> <li>2. Describe Internet Technology and Services (VOIP, BLOG).</li> <li>3. Describe types of network (examples: PAN, VPN, WLAN, WIMAX).</li> <li>4. Follow required report format:               <ol style="list-style-type: none"> <li>a. content format</li> <li>b. document format</li> </ol> </li> <li>5. Display cooperation.               <ol style="list-style-type: none"> <li>a. Write the names of group members.</li> <li>b. Verbal verification from group members or assessor's observation</li> </ol> </li> </ol> <p><b>Complete TWO to FOUR tasks.</b></p>	Written Assignment	<p>Candidates work in groups of 2 to 4 to conduct the study and for discussion.</p> <p>Report must be done individually. Suggested duration: 2 to 4 weeks</p> <p>Refer to Writing Format in WAF.CW.LA3.S07.1</p> <p>Values:</p> <ul style="list-style-type: none"> <li>• cooperate</li> <li>• responsible</li> <li>• abide</li> </ul>

SCORE	CRITERIA	EVIDENCE	NOTE
0	<ol style="list-style-type: none"> <li>1. Describe Mobile Computing (specifications, services, frequencies).</li> <li>2. Describe Internet Technology and Services (VOIP, BLOG).</li> <li>3. Describe types of network (examples: PAN, VPN, WLAN, WIMAX).</li> <li>4. Follow required report format:               <ol style="list-style-type: none"> <li>a. content format</li> <li>b. document format</li> </ol> </li> <li>5. Display cooperation.               <ol style="list-style-type: none"> <li>a. Write the names of group members.</li> <li>b. Verbal verification from group members or assessor's observation.</li> </ol> </li> </ol> <p><b>Complete any ONE task.</b></p>	Written Assignment	<p>Candidates work in groups of 2 to 4 to conduct the study and for discussion.</p> <p>Report must be done individually.</p> <p>Suggested duration: 2 to 4 weeks</p> <p>Refer to Writing Format in WAF.CW.LA3.S07.1</p> <p>Values:</p> <ul style="list-style-type: none"> <li>• cooperate</li> <li>• responsible</li> <li>• abide</li> </ul>

**WRITTEN ASSIGNMENT FORMAT****LEARNING AREA: COMPUTER NETWORKS AND COMMUNICATIONS**

<b>Construct</b>	: S07	Current and Future Development in Networks and Communications
<b>Aspect</b>	: LA3.S07.1	Describe the Latest Development in Networks and Communications
<b>Instrument</b>	:	Written Assignment

**Instruction:**

Work in groups of two to four to find information and discuss on the latest development in Networks and Communications. Complete this written assignment **individually**.

You are given two to four weeks to complete this assignment.

**Content format**

- 1.0 Introduction  
(Computer Networks and Communications)
- 2.0 Mobile Computing
  - 2.1 Definition
  - 2.2 Specification, services, and frequencies of Mobile Computing  
(based on one product e.g. PDA, 3G mobile phone)
- 3.0 Internet Technology and Services
  - 3.1 VoIP
  - 3.2 BLOG
- 4.0 Types of network.
  - 4.1 PAN
  - 4.2 VPN
  - 4.3 WLAN
  - 4.4 WIMAX
- 5.0 Conclusion  
(Computer Networks and Communications)

**Reference**

(give at least two sources of reference)

**Document Format** (use Word Processor)

- cover page
  - Candidate's details
  - Title: The Latest Development in Networks and Communications
- page margin - top, bottom, left, and right: 1", paper size - A4
- line spacing: 1.5 lines
- typeface - Times New Roman, font size - 12 pts (content), 14 pts for title/heading
- number of pages - 3 to 10



**LEMBAGA PEPERIKSAAN  
KEMENTERIAN PELAJARAN MALAYSIA**

**ASSESSMENT CHECKLIST FORM**

LEARNING AREA : **COMPUTER NETWORKS AND COMMUNICATIONS**

Name of Candidate	
IC No	
Index No	

**Construct** : S07 Current and Future Development in Networks and Communications  
**Aspect** : LA3.S07.1 Describe the Latest Development in Networks and Communications.  
**Instrument** : Written Assignment  
**Assessment** : 1 / 2 / 3 / \_

No.	Criterion	Evidence (to be filled by candidate if necessary)	Assessor tick (✓) if completed		Remarks by assessor
1.	Describe Mobile Computing a. definition b. specification, services, and frequencies				
2.	Describe Internet Technology and Services a. VoIP b. BLOG				
3.	Describe types of network. a. PAN b. VPN c. WLAN d. WIMAX				
4.	Follow required written assignment format c. content format d. document format				
5.	Display cooperation. c. Write the names of group members. d. Verbal verification from group members or assessor's observation				
<b>SCORE</b>					

Candidate's Signature

Assessor's Signature

-----

-----

Name :

Date :

**TABLE OF CONSTRUCT**

**Construct** : S08 Multimedia Development  
**Aspect** : LA4.S08.1 Apply All The Phases Of Multimedia Production To Produce An Interactive Educational Multimedia Project.  
**Instrument** : Project

SCORE	CRITERIA	EVIDENCE	NOTE
2	<p><b>1. Analysis Phase</b> Write the project title, objective(s) and target audience.</p> <p><b>2. Design Phase</b> Sketch storyboard.</p> <p><b>3. Implementation Phase</b> Develop a multimedia project based on the storyboard using an authoring tool. Write the name of the authoring tool used.</p> <p><b>4. Testing Phase</b> Test the developed multimedia product. Complete the checklist.</p> <hr/> <p><b>5. Evaluation Phase</b> Ask assessor to evaluate the developed multimedia product.</p> <p>a. Content</p> <ul style="list-style-type: none"> <li>▪ match the project objective(s)</li> </ul> <p>b. Interface</p> <ul style="list-style-type: none"> <li>▪ user friendly</li> <li>▪ interactive</li> </ul> <p>c. Navigation</p> <ul style="list-style-type: none"> <li>▪ all links/buttons functioning correctly</li> </ul> <p>d. Multimedia Elements</p> <ul style="list-style-type: none"> <li>▪ text</li> <li>▪ graphic</li> <li>▪ audio</li> <li>▪ video</li> <li>▪ animation</li> </ul>	<p>Completed <b>RF.CW.LA4.S08.1</b> and a soft copy of the product.</p>	<p>The multimedia product must be interactive, educational and include all five multimedia elements.</p> <p>Choose any topic from any subjects taught in school:</p> <ul style="list-style-type: none"> <li>• ICT</li> <li>• Bahasa Malaysia</li> <li>• Bahasa Inggeris</li> <li>• Mathematics</li> <li>• Science, etc</li> </ul> <p>Values:</p> <ul style="list-style-type: none"> <li>▪ Creative</li> <li>▪ Integrity</li> <li>▪ Responsible</li> </ul>

SCORE	CRITERIA	EVIDENCE	NOTE
	<p><b>6. Publishing Phase</b> Submit a softcopy of the multimedia product. Write the storage medium used and name of the main file or folder.</p> <p><b>Complete all SIX tasks.</b></p>		
1	<p><b>1. Analysis Phase</b> Write the project title, objective(s) and target audience.</p> <p><b>2. Design Phase</b> Sketch storyboard.</p> <p><b>3. Implementation Phase</b> Develop a multimedia project based on the storyboard using an authoring tool. Write the name of the authoring tool used.</p> <p><b>4. Testing Phase</b> Test the developed multimedia product. Complete the checklist.</p> <p><b>5. Evaluation Phase</b> Ask assessor to evaluate the developed multimedia product.</p> <p>a. Content</p> <ul style="list-style-type: none"> <li>▪ match the project objective(s)</li> </ul> <p>b. Interface</p> <ul style="list-style-type: none"> <li>▪ user friendly</li> <li>▪ interactive</li> </ul> <p>c. Navigation</p> <ul style="list-style-type: none"> <li>▪ all links/buttons functioning correctly</li> </ul> <p>d. Multimedia Elements</p> <ul style="list-style-type: none"> <li>▪ text</li> <li>▪ graphic</li> <li>▪ audio</li> <li>▪ video</li> <li>▪ animation</li> </ul> <p><b>6. Publishing Phase</b> Submit a softcopy of the multimedia product. Write the storage medium used and name of the main file or folder.</p> <p><b>Complete TWO to FIVE tasks.</b></p>	<p>Completed <b>RF.CW.LA4.S08.1</b> and a soft copy of the product.</p>	<p>The multimedia product must be interactive, educational and include all five multimedia elements.</p> <p>Choose any topic from any subjects taught in school:</p> <ul style="list-style-type: none"> <li>• ICT</li> <li>• Bahasa Malaysia</li> <li>• Bahasa Inggeris</li> <li>• Mathematics</li> <li>• Science, etc</li> </ul> <p>Values:</p> <ul style="list-style-type: none"> <li>▪ Creative</li> <li>▪ Integrity</li> <li>▪ Responsible</li> </ul>

SCORE	CRITERIA	EVIDENCE	NOTE
0	<p><b>1. Analysis Phase</b> Write the project title, objective(s) and target audience.</p> <p><b>2. Design Phase</b> Sketch storyboard.</p> <p><b>3. Implementation Phase</b> Develop a multimedia project based on the storyboard using an authoring tool. Write the name of the authoring tool used.</p> <p><b>4. Testing Phase</b> Test the developed multimedia product. Complete the checklist.</p> <p><b>5. Evaluation Phase</b> Ask assessor to evaluate the developed multimedia product.</p> <p>a. Content</p> <ul style="list-style-type: none"> <li>▪ match the project objective(s)</li> </ul> <p>b. Interface</p> <ul style="list-style-type: none"> <li>▪ user friendly</li> <li>▪ interactive</li> </ul> <p>c. Navigation</p> <ul style="list-style-type: none"> <li>▪ all links/buttons functioning correctly</li> </ul> <p>d. Multimedia Elements</p> <ul style="list-style-type: none"> <li>▪ text</li> <li>▪ graphic</li> <li>▪ audio</li> <li>▪ video</li> <li>▪ animation</li> </ul> <p><b>6. Publishing Phase</b> Submit a softcopy of the multimedia product. Write the storage medium used and name of the main file or folder.</p> <p><b>Complete any ONE task.</b></p>	<p>Completed <b>RF.CW.LA4.S08.1</b> and a soft copy of the product.</p>	<p>The multimedia product must be interactive, educational and include all five multimedia elements.</p> <p>Choose any topic from any subjects taught in school:</p> <ul style="list-style-type: none"> <li>• ICT</li> <li>• Bahasa Malaysia</li> <li>• Bahasa Inggeris</li> <li>• Mathematics</li> <li>• Science, etc</li> </ul> <p>Values:</p> <ul style="list-style-type: none"> <li>▪ Creative</li> <li>▪ Integrity</li> <li>▪ Responsible</li> </ul>

**REPORT FORM**LEARNING AREA : **MULTIMEDIA**

Name of Candidate	
IC No	
Index No	

**Construct** : S08 Multimedia Development

**Aspect** : LA4.S08.1 Apply All The Phases Of Multimedia Production To Produce An Interactive Educational Multimedia Project.

**Instrument** : Project

**1. ANALYSIS PHASE**

Project Title	
Objective(s)	
Target Audience	

**2. DESIGN PHASE (attach storyboard if space provided not enough)**

--

<b>3. IMPLEMENTATION PHASE</b>			
Authoring tool			
<b>4. TESTING PHASE</b>			
<b>CHECKLIST FORM</b>			
	<b>Items</b>	<b>YES</b>	<b>NO</b>
A	<b>Content</b>		
	Match the project goal		
B	<b>Interface</b>		
	User-friendly		
	Interactive		
C	<b>Navigation</b>		
	All links/buttons functioning correctly		
<b>5. EVALUATION PHASE</b>			
<i>(to be carried out by the assessor using ACF.CW.LA4.S08.1)</i>			
<b>6. PUBLISHING PHASE</b>			
Storage Medium			
Main File/Folder Name			

Candidate's Signature

-----



**LEMBAGA PEPERIKSAAN  
KEMENTERIAN PELAJARAN MALAYSIA  
ASSESSMENT CHECKLIST FORM**

LEARNING AREA : **MULTIMEDIA**

Name of Candidate	
IC No	
Index No	

**Construct** : S08 Multimedia Development  
**Aspect** : LA4.S08.1 Apply All The Phases Of Multimedia Production To Produce An Interactive Educational Multimedia Project  
**Instrument** : Project  
**Assessment** : 1 / 2 / 3 / \_

No	Criterion	Evidence (to be filled by candidate if necessary)	Assessor tick (✓) if completed	Remarks by assessor
1.	<b>Analysis Phase</b> Write the a. project title b. objective(s) c. target audience	Refer to <b>RF.CW.LA4.S08.1</b>	<input type="checkbox"/>	
			<input type="checkbox"/>	
			<input type="checkbox"/>	
2.	<b>Design Phase</b> Sketch storyboard.		<input type="checkbox"/>	
3.	<b>Implementation Phase</b> Develop a multimedia project based on the storyboard using an authoring tool. Write the name of the authoring tool used.	<input type="checkbox"/>		
4.	<b>Testing Phase</b> Test the developed multimedia product. Complete the checklist.	<input type="checkbox"/>		

No	Criterion	Evidence (to be filled by candidate if necessary)	Assessor tick (✓) if completed		Remarks by assessor
5.	<b>Evaluation Phase</b> Ask assessor to evaluate the developed multimedia product. <b>e. Content</b> <ul style="list-style-type: none"> <li>▪ match the project objective(s)</li> </ul> <b>f. Interface</b> <ul style="list-style-type: none"> <li>▪ user friendly</li> <li>▪ interactive</li> </ul> <b>g. Navigation</b> <ul style="list-style-type: none"> <li>▪ flow of the slides</li> <li>▪ all buttons functioning</li> </ul> <b>h. Multimedia Elements</b> <ul style="list-style-type: none"> <li>▪ Text</li> <li>▪ Graphic</li> <li>▪ Audio</li> <li>▪ Video</li> <li>▪ Animation</li> </ul>				
6.	<b>Publishing Phase</b> Submit a softcopy of the multimedia product. Write the storage medium used and name of the main file or folder.				
<b>SCORE</b>					

Candidate's Signature

Assessor's Signature

-----

-----

Name :

Date :

**TABLE OF CONSTRUCT**

**Construct** : S09 Current and Future Development of Multimedia  
**Aspect** : LA4.S09.1 Gather Examples of Immersive Multimedia In Education, Business or Entertainment  
**Instrument** : Scrapbook

SCORE	CRITERIA	EVIDENCE	NOTE
<b>2</b>	5. Front cover includes a. title b. name of candidate 6. Scrapbook contains at least <b>SIX</b> pages excluding front and back covers. 7. Collections are relevant to the topic chosen. 8. State source and/or date in the scrapbook. 9. Submit RF.CW.LA4.S09.1  <b>Complete all FIVE tasks.</b>	Completed <b>RF.CW.LA4.S09.1</b> <b>AND</b> Scrapbook	Candidate compiles articles, pictures, drawings from different types of sources such as newspapers, magazines, Internet, etc into a scrapbook based on any of the following: a. Immersive Multimedia in Education • Immersive Multimedia in Business • Immersive Multimedia in Entertainment Scrapbook must be done individually.  Values: • creative • responsible • appreciate
<b>1</b>	1. Front cover includes b. topic c. name of candidate 2. Scrapbook contains at least <b>SIX</b> pages excluding front and back covers. 3. Collections are relevant to the topic chosen. 4. State source and/or date in the scrapbook. 5. Submit RF.CW.LA4.S09.1  <b>Complete TWO to FOUR tasks.</b>	Completed <b>RF.CW.LA4.S09.1</b> <b>AND</b> Scrapbook	Candidate compiles articles, pictures, drawings from different types of sources such as newspapers, magazines, Internet, etc into a scrapbook based on any of the following: • Immersive Multimedia in Education • Immersive Multimedia in Business • Immersive Multimedia in Entertainment Scrapbook must be done individually.  Values: • creative • responsible • appreciate

SCORE	CRITERIA	EVIDENCE	REMARKS
0	1. Front cover includes d. topic e. name of candidate 2. Scrapbook contains at least <b>SIX</b> pages excluding front and back covers. 3. Collections are relevant to the topic chosen. 4. State source and/or date in the scrapbook. 5. Submit RF.CW.LA4.S09.1  <b>Complete any ONE task.</b>	Completed <b>RF.CW.LA4.S09.1</b> <b>AND</b> Scrapbook	Candidate compiles articles, pictures, drawings from different types of sources such as newspapers, magazines, Internet, etc into a scrapbook based on any of the following: <ul style="list-style-type: none"> <li>• Immersive Multimedia in Education</li> <li>• Immersive Multimedia in Business</li> <li>• Immersive Multimedia in Entertainment</li> </ul> Scrapbook must be done individually.  Values: <ul style="list-style-type: none"> <li>• creative</li> <li>• responsible</li> <li>• appreciate</li> </ul>

**REPORT FORM**LEARNING AREA : **MULTIMEDIA**

Name of Candidate	
IC No	
Index No	

**Construct** : S11 Current And Future Development Of Multimedia  
**Aspect** : LA5.S11.1 Gather Examples of Immersive Multimedia In Education, Business Or Entertainment  
**Instrument** : Scrapbook

<b>Activity Log</b> (record all activities carried out in compiling the scrapbook)		
<b>Date</b>	<b>Activity</b>	<b>Remarks</b>

Candidate's Signature

-----



**LEMBAGA PEPERIKSAAN  
KEMENTERIAN PELAJARAN MALAYSIA  
ASSESSMENT CHECKLIST FORM**

LEARNING AREA : **MULTIMEDIA**

Name of Candidate	
IC No	
Index No	

**Construct** : S09 Current And Future Development Of Multimedia  
**Aspect** : LA4.S09.1 Gather Examples Of Immersive Multimedia In Education, Business Or Entertainment.  
**Instrument** : Scrapbook  
**Assessment** : 1 / 2 / 3 / \_

No.	Criterion	Evidence (to be filled by candidate if necessary)	Assessor tick (✓) if completed		Remarks by assessor
1	Front cover includes <ul style="list-style-type: none"> <li>▪ topic</li> <li>▪ name of candidate</li> </ul>				
2	Scrapbook contains at least <b>SIX</b> pages excluding front and back covers. State number of pages.				
3	Collections are relevant to the topic chosen.				
4	State source and/or date in the scrapbook.				
5	Submit RF.CW.LA4.S09.1				
<b>SCORE</b>					

Candidate's Signature

Assessor's Signature

-----

-----

Name :

Date :

**TABLE OF CONSTRUCT**

**Construct** : S10 Program Development  
**Aspect** : LA5.S10.1 Apply Program Development Phases To Develop A Problem-Solving Program  
**Instrument** : Practical Session

SCORE	CRITERIA	EVIDENCE	NOTE
2	1. Problem Analysis	Completed <b>RF.CW.LA5.S10.1</b> AND Program file(s)	Duration of practical session: 2 periods  Choose any of the suggested projects (refer to APPENDIX B) or propose a new project.  Submit <ul style="list-style-type: none"> <li>• executable file and/or</li> <li>• project file and form(s).</li> </ul> During evaluation, assessor runs the candidate's program to validate the output in 4(b) using the data in 4(a).  Values: <ol style="list-style-type: none"> <li>1. Accurate</li> <li>2. Confident</li> <li>3. Responsible</li> <li>4. Abide</li> </ol>
	a. Write the problem statement.		
	b. List all the required input items.		
	c. Write the expected output.		
	d. Write the formula to be used.		
	2. Program Design		
	a. Write the pseudocode. OR Draw the flowchart.		
	b. Sketch the user interface design for input.		
	c. Sketch the user interface design for output.		
	3. Coding		
	Develop a program based on (1) and (2). Write the name of the project file.		
	4. Testing and Debugging		
	a. State the test data used for each input item listed in 1(b).		
	b. Write the output based on 4(a)		
	c. Compile the program. Write down the name of the executable file.		
5. Documentation			
Submit report and soft copy of program.			
<b>Complete all FIVE tasks.</b>			

SCORE	CRITERIA	EVIDENCE	NOTE
1	1. Problem Analysis	Completed <b>RF.CW.LA5.S10.1</b> AND Program file(s)	Duration of practical session: 2 periods  Choose any of the suggested projects (refer to APPENDIX B) or propose a new project.  Submit <ul style="list-style-type: none"> <li>• executable file and/or</li> <li>• project file and form(s).</li> </ul> During evaluation, assessor runs the candidate's program to validate the output in 4(b) using the data in 4(a).  Values: <ol style="list-style-type: none"> <li>1. Accurate</li> <li>2. Confident</li> <li>3. Responsible</li> <li>4. Abide</li> </ol>
	a. Write the problem statement.		
	b. List all the required input items.		
	c. Write the expected output.		
	d. Write the formula to be used.		
	2. Program Design		
	a. Write the pseudocode. OR Draw the flowchart.		
	b. Sketch the user interface design for input.		
	c. Sketch the user interface design for output.		
	3. Coding		
	Develop a program based on (1) and (2). Write the name of the project file.		
	4. Testing and Debugging		
	a. State the test data used for each input item listed in 1(b).		
	b. Write the output based on 4(a)		
	c. Compile the program. Write down the name of the executable file.		
5. Documentation			
Submit report and soft copy of program.			
<b>Complete TWO to FOUR tasks.</b>			

SCORE	CRITERIA	EVIDENCE	NOTE
<b>0</b>	1. Problem Analysis	Completed <b>RF.CW.LA5.S10.1</b> AND Program file(s)	Duration of practical session: 2 periods  Choose any of the suggested projects (refer to APPENDIX B) or propose a new project.  Submit <ul style="list-style-type: none"> <li>• executable file and/or</li> <li>• project file and form(s).</li> </ul> During evaluation, assessor runs the candidate's program to validate the output in 4(b) using the data in 4(a).  Values: <ul style="list-style-type: none"> <li>a. Accurate</li> <li>b. Confident</li> <li>c. Responsible</li> <li>d. Abide</li> </ul>
	a. Write the problem statement.		
	b. List all the required input items.		
	c. Write the expected output.		
	d. Write the formula to be used.		
	2. Program Design		
	a. Write the pseudocode. OR Draw the flowchart.		
	b. Sketch the user interface design for input.		
	c. Sketch the user interface design for output.		
	3. Coding		
	Develop a program based on (1) and (2). Write the name of the project file.		
	4. Testing and Debugging		
	a. State the test data used for each input item listed in 1(b).		
	b. Write the output based on 4(a)		
	c. Compile the program. Write down the name of the executable file.		
	5. Documentation		
Submit report and soft copy of program.			
<b>Complete any ONE task.</b>			

**REPORT FORM**LEARNING AREA : **PROGRAMMING**

Name of Candidate	
IC No	
Index No	

**Construct** : S10 Program Development  
**Aspect** : LA5.S10.1 Apply Program Development Phases To Develop A Problem-Solving Program  
**Instrument** : Practical Session  
**Assessment** : 1 / 2 / 3 / \_

<b>1. Problem Analysis</b>	
a. Problem Statement	
b. Required Input	
c. Expected Output	
d. Formula Used	
<b>2. Program Design</b>	
a. Pseudocode <b>OR</b> Flowchart	

b. User Interface Design for Input		
c. User Interface Design for Output		
<b>3. Coding</b>		
(refer to program submitted) Project File Name: _____		
<b>4. Testing and Debugging</b>		
a. State the data used for each input item listed in 1(b).	Input item (s)	Input data
b. Write the output based on the input data in 4(a)	Output item(s)	Actual Output
c. Name of the executable file		



**LEMBAGA PEPERIKSAAN  
KEMENTERIAN PELAJARAN MALAYSIA**

**ASSESSMENT CHECKLIST FORM**

LEARNING AREA : **PROGRAMMING**

Name of Candidate	
IC No	
Index No	

**Construct** : S10 Program Development  
**Aspect** : LA5.S10.1 Apply Program Development Phases To Develop A Problem-Solving Program  
**Type of Instrument** : Practical Session  
**Assessment** : 1 / 2 / 3 / \_

No.	Criterion	Evidence (to be filled by candidate if necessary)	Assessor tick (✓) if completed		Remarks by assessor		
1	<b>Problem Analysis</b>	Refer to RF.CW.LA5.S10.1					
	a. Write the problem statement.						
	b. List all required input items.						
	c. Write the expected output.						
d. Write the formula to be used.							
2	<b>Program Design</b>		Refer to RF.CW.LA5.S10.1				
	a. Write the pseudocode. <b>OR</b> Draw the flowchart.						
	b. Sketch the user interface design for input.						
	c. Sketch the user interface design for output.						

No.	Criterion	Evidence (to be filled by candidate if necessary)	Assessor tick (✓) if completed		Remarks by assessor
3	<b>Coding</b> Develop a program based on (1) and (2). Write the name of the project file.	Refer to RF.CW.LA5.S10.1 and submitted program.			
4	<b>Testing and Debugging</b>				
	a. Write down the data used for each input item listed in 1(b).				
	b. Write down output based on 4(a).				
c. Compile the program. Write down name of executable file.					
5	<b>Documentation</b> Submit report and soft copy of program.				
<b>SCORE</b>					

Candidate's Signature

Assessor's Signature

-----

-----

Name :

Date :

## TABLE OF CONSTRUCT

TOC.CW.LA5.S11.1

**Construct** : S11 Current And Future Development Of The Latest Programming Languages  
**Aspect** : LA5.S11.1 Find Out The Latest Programming Languages  
**Instrument** : Report

SCORE	CRITERIA	EVIDENCE	NOTE
<b>2</b>	1. Identify and name the two latest programming languages 2. Identify and state <ol style="list-style-type: none"> <li>a. the developer</li> <li>b. when it was developed</li> <li>c. purpose (why it was introduced)/application</li> <li>d. platform</li> <li>e. approach (structured/object-oriented/etc)</li> <li>f. translator used</li> </ol> 3. State the source of reference.  <b>Complete all THREE tasks.</b>	Completed <b>RF.CW.LA5.S11.1</b>	Report must be done individually. Suggested duration: 2 weeks Values: <ul style="list-style-type: none"> <li>• Cooperate</li> <li>• Appreciate</li> </ul>
<b>1</b>	1. Identify and name the two latest programming languages 2. Identify and state <ol style="list-style-type: none"> <li>a. the developer</li> <li>b. when it was developed</li> <li>c. purpose (why it was introduced)/application</li> <li>d. platform</li> <li>e. approach (structured/object-oriented/etc)</li> <li>f. translator used</li> </ol> 3. State the source of reference.  <b>Complete TWO tasks.</b>	Completed <b>RF.CW.LA5.S11.1</b>	Report must be done individually. Suggested duration: 2 weeks Values: <ul style="list-style-type: none"> <li>• Cooperate</li> <li>• Appreciate</li> </ul>
<b>0</b>	1. Identify and name the two latest programming languages 2. Identify and state <ol style="list-style-type: none"> <li>a. the developer</li> <li>b. when it was developed</li> <li>c. purpose (why it was introduced)/application</li> <li>d. platform</li> <li>e. approach (structured/object-oriented/etc)</li> <li>f. translator used</li> </ol> 3. State the source of reference.  <b>Complete any ONE task.</b>	Completed <b>RF.CW.LA5.S11.1</b>	Report must be done individually. Suggested duration: 2 weeks Values: <ul style="list-style-type: none"> <li>• Cooperate</li> <li>• Appreciate</li> </ul>

## REPORT FORM

LEARNING AREA : **PROGRAMMING**

Name of Candidate	
IC No	
Index No	

**Construct** : S11 Current And Future Development Of The Latest Programming Languages

**Aspect** : LA5.S11.1 Find Out The Latest Programming Languages

**Instrument** : Report

Name of Latest Programming Language	1.	2.
Developer		
Year Developed		
Purpose		
Platform (OS)		
Approach		
Translator used		
Special features (optional)		
Source of Reference		

Candidate's Signature

-----



**LEMBAGA PEPERIKSAAN  
KEMENTERIAN PELAJARAN MALAYSIA**

**ASSESSMENT CHECKLIST FORM**

LEARNING AREA : **PROGRAMMING**

Name of Candidate	
IC No	
Index No	

**Construct** : S11 Current And Future Development Of The Latest Programming Languages  
**Aspect** : LA5.S11.1 Find Out The Latest Programming Languages  
**Instrument** : Report  
**Assessment** : 1 / 2 / 3 / \_

No.	Criterion	Evidence (to be filled by candidate if necessary)	Assessor tick (✓) if completed	Remarks by assessor	
1.	Identify and name the two latest programming languages	Refer to <b>RF.CW.LA5.S11.1</b>			
2.	Identify and state				
	a. the developer				
	b. when it was developed				
	c. purpose (why it was introduced) / application				
	d. platform				
	e. approach (structured/object-oriented/etc)				
	f. translator used				
3.	State the source of reference				
<b>SCORE</b>					

Candidate's Signature

Assessor's Signature

-----

-----

Name :

Date :

**TABLE OF CONSTRUCT**

**Construct** : S12 Database Development  
**Aspect** : LA6.S12.1 Develop A Database Project  
**Instrument** :

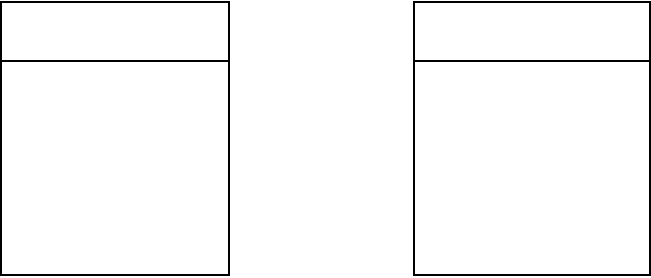
SCORE	CRITERIA	EVIDENCE	NOTE									
2	<ol style="list-style-type: none"> <li>State the project title and the objective(s) of the project.</li> <li>Create all the required tables.                             <ol style="list-style-type: none"> <li>Name each table.</li> <li>State the field names for each table.</li> <li>State the primary key(s).</li> <li>Relate the tables. Draw a line to show the relationship.</li> </ol> </li> <li>Create a form for each table.</li> <li>Enter data into the tables.</li> <li>Create a query from two tables.</li> <li>Create a report based on the query created.</li> <li>Submit the report form and a soft copy of the developed database project.</li> </ol> <p><b>Complete all SEVEN tasks.</b></p>	<p>Completed  <b>RF.CW.LA6.S12.1</b>                      AND                      soft copy of the database project</p>	<p>Duration of practical session: 2 periods</p> <p>Choose any of the suggested projects in APPENDIX C or propose a new project.</p> <p>Draw a line to show the relationship between both tables.                      Example:</p> <table border="1"> <tr> <td>TABLE 1</td> <td></td> <td>TABLE 2</td> </tr> <tr> <td>Field name</td> <td></td> <td>Field name</td> </tr> <tr> <td>.....</td> <td>1:M or M:N or 1:1</td> <td>.....</td> </tr> </table> <p>Values:</p> <ul style="list-style-type: none"> <li>accurate</li> <li>confident</li> <li>responsible</li> </ul>	TABLE 1		TABLE 2	Field name		Field name	.....	1:M or M:N or 1:1	.....
TABLE 1		TABLE 2										
Field name		Field name										
.....	1:M or M:N or 1:1	.....										
1	<ol style="list-style-type: none"> <li>State the project title and the objective(s) of the project.</li> <li>Create all the required tables.                             <ol style="list-style-type: none"> <li>Name each table.</li> <li>State the field names for each table.</li> <li>State the primary key(s).</li> <li>Relate the tables. Draw a line to show the relationship.</li> </ol> </li> <li>Create a form for each table.</li> <li>Enter data into the tables.</li> <li>Create a query from two tables.</li> </ol>	<p>Completed  <b>RF.CW.LA6.S12.1</b>                      AND                      soft copy of the database project</p>	<p>Duration of practical session: 2 periods</p> <p>Choose any of the suggested projects in APPENDIX C or propose a new project.</p> <p>Draw a line to show the relationship between both tables.                      Example:</p> <table border="1"> <tr> <td>TABLE 1</td> <td></td> <td>TABLE 2</td> </tr> <tr> <td>Field name</td> <td></td> <td>Field name</td> </tr> <tr> <td>.....</td> <td>1:M or M:N or 1:1</td> <td>.....</td> </tr> </table>	TABLE 1		TABLE 2	Field name		Field name	.....	1:M or M:N or 1:1	.....
TABLE 1		TABLE 2										
Field name		Field name										
.....	1:M or M:N or 1:1	.....										

SCORE	CRITERIA	EVIDENCE	NOTE									
	6. Create a report based on the query created. 7. Submit the report form and a soft copy of the developed database project.  <b>Complete TWO to SIX tasks.</b>		Values: <ul style="list-style-type: none"> <li>• accurate</li> <li>• confident</li> <li>• responsible</li> </ul>									
0	1. State the project title and the objective(s) of the project. 2. Create all the required tables. <ol style="list-style-type: none"> <li>a. Name each table.</li> <li>b. State the field names for each table.</li> <li>c. State the primary key(s).</li> <li>d. Relate the tables. Draw a line to show the relationship.</li> </ol> 3. Create a form for each table. 4. Enter data into the tables. 5. Create a query from two tables. 6. Create a report based on the query created. 7. Submit the report form and a soft copy of the developed database project.  <b>Complete any ONE task.</b>	Completed <b>RF.CW.LA6.S12.1</b> AND soft copy of the database project	Duration of practical session: 2 periods  Choose any of the suggested projects in APPENDIX C or propose a new project.  Draw a line to show the relationship between both tables. Example: <table border="1" data-bbox="1027 846 1385 1102" style="margin-left: auto; margin-right: auto;"> <tr> <td style="text-align: center;">TABLE 1</td> <td></td> <td style="text-align: center;">TABLE 2</td> </tr> <tr> <td style="text-align: center;">Field name</td> <td></td> <td style="text-align: center;">Field name</td> </tr> <tr> <td style="text-align: center;">.....</td> <td style="text-align: center;">1:M or M:N or 1:1</td> <td style="text-align: center;">.....</td> </tr> </table> Values: <ul style="list-style-type: none"> <li>• accurate</li> <li>• confident</li> <li>• responsible</li> </ul>	TABLE 1		TABLE 2	Field name		Field name	.....	1:M or M:N or 1:1	.....
TABLE 1		TABLE 2										
Field name		Field name										
.....	1:M or M:N or 1:1	.....										

**REPORT FORM**LEARNING AREA : **INFORMATION SYSTEM**

Name of Candidate	
IC No	
Index No	

**Construct** : S12 Database Development  
**Aspect** : LA6.S12.1 Develop A Database Project  
**Instrument** : Practical Session  
**Assessment** : 1 / 2 / 3 / \_

1.	Project title		
	Objective(s)		
2.		Table 1	Table 2
	Table name		
	Field names		
	Primary key		
	The relationship between both tables.		
3.	Name of forms		
4.	Number of records entered	Table _____	Table _____
5.	Criteria used for query	Field Name: Criteria:	
6.	Name of report		
7.	Name of file		

Candidate's Signature

-----



**LEMBAGA PEPERIKSAAN  
KEMENTERIAN PELAJARAN MALAYSIA**

**ASSESSMENT CHECKLIST FORM**

LEARNING AREA : **INFORMATION SYSTEM**

Name of Candidate	
IC No	
Index No	

**Construct** : S12 Database Development  
**Aspect** : LA6.S12.1 Develop A Database Project  
**Type of Instrument** : Practical Session  
**Assessment** : 1 / 2 / 3 / \_

No.	Criterion	Evidence (to be filled by candidate if necessary)	Assessor tick (✓) if completed	Remarks by assessor
1.	State the project title and the objective(s) of the project.	Refer to <b>RF.CW.LA6.S12.1</b> AND soft copy of the database project		
2.	Create all the required tables. a. Name each table. b. State the field names for each table. c. State the primary key(s). d. Relate the tables. Draw a line to show the relationship.			
3.	Create a form for each table.			
4.	Enter data into the tables.			
5.	Create a query from two tables.			
6.	Create a report based on the query created.			
7.	Submit the report form and a softcopy of the developed database project.			
<b>SCORE</b>				

Candidate's Signature

Assessor's Signature

-----

-----

Name :

Date :

**TABLE OF CONSTRUCT**

Construct : S13 Current And Future Developments In Information Systems  
 Aspect : LA6.S13.1 Find Out Current Developments In Computer Information Systems.  
 Instrument : Report

SCORE	CRITERIA	EVIDENCE	NOTE
2	1. Define web-based application. 2. Give an example of web-based application. 3. State the function of the application. 4. Name a programming language used to develop web-based application. 5. Name a DBMS used in web-based application. 6. State an advantage of web-based application compared to non web-based application. 7. State a vulnerability of web-based application. 8. State source of reference.  <b>Complete all EIGHT tasks.</b>	Completed <b>RF.CW.LA6.S13.1</b>	Report must be done individually.  Suggested duration: 2 weeks  Values: • cooperate • responsible
1	1. Define web-based application. 2. Give an example of web-based application. 3. State the function of the application. 4. Name a programming language used to develop web-based application. 5. Name a DBMS used in web-based application. 6. State an advantage of web-based application compared to non web-based application. 7. State a vulnerability of web-based application. 8. State source of reference.  <b>Complete TWO to SEVEN tasks.</b>	Completed <b>RF.CW.LA6.S13.1</b>	Report must be done individually.  Suggested duration: 2 weeks  Values: • cooperate • responsible
0	1. Define web-based application. 2. Give an example of web-based application. 3. State the function of the application. 4. Name a programming language used to develop web-based application. 5. Name a DBMS used in web-based application. 6. State an advantage of web-based application compared to non web-based application. 7. State a vulnerability of web-based application. 8. State source of reference.  <b>Complete any ONE task.</b>	Completed <b>RF.CW.LA6.S13.1</b>	Report must be done individually.  Suggested duration: 2 weeks  Values: • cooperate • responsible

## REPORT FORM

LEARNING AREA : INFORMATION SYSTEM

Name of Candidate	
IC No	
Index No	

**Construct** : S13 Current And Future Developments In Information Systems  
**Aspect** : LA6.S13.1 Find Out Current Developments In Computer Information Systems.  
**Instrument** : Report

Definition of web-based application	
An example of web-based application	
Function of the application	
An example of a programming language used to develop web-based application.	
An example of a DBMS used in the web-based application.	
An advantage of web-based application (compared to non web-based application)	
A vulnerability of web-based application	
Source of Reference	

Candidate's Signature

-----



**LEMBAGA PEPERIKSAAN  
KEMENTERIAN PELAJARAN MALAYSIA**

**ASSESSMENT CHECKLIST FORM**

LEARNING AREA : **INFORMATION SYSTEM**

Name of Candidate	
IC No	
Index No	

**Construct** : S13 Current And Future Developments In Information Systems

**Aspect** : LA6.S13.1 Find Out Current Developments In Computer Information Systems

**Instrument** : Report

**Assessment** : 1 / 2 / 3 / \_

No.	Criterion	Evidence (to be filled by candidate if necessary)	Assessor tick (✓) if completed	Remarks by assessor
1	Define web-based application.	Refer to <b>RF.CW.LA6.S13.1</b>		
2	Give an example of web-based application. State the function of the application.			
3	Name a programming language used to develop web-based application. Name a DBMS used in web-based application.			
4	State an advantage of web-based application compared to non web-based application.			
5	State a vulnerability of web-based application.			
6	State source of reference.			
<b>SCORE</b>				

Candidate's Signature

Assessor's Signature

-----

-----

Name :

Date :

**SECTION C**  
**OPERATION**  
**ADMINISTRATION**



## **13.0 OPERATION/ ADMINISTRATION**

### **13.1 Administration**

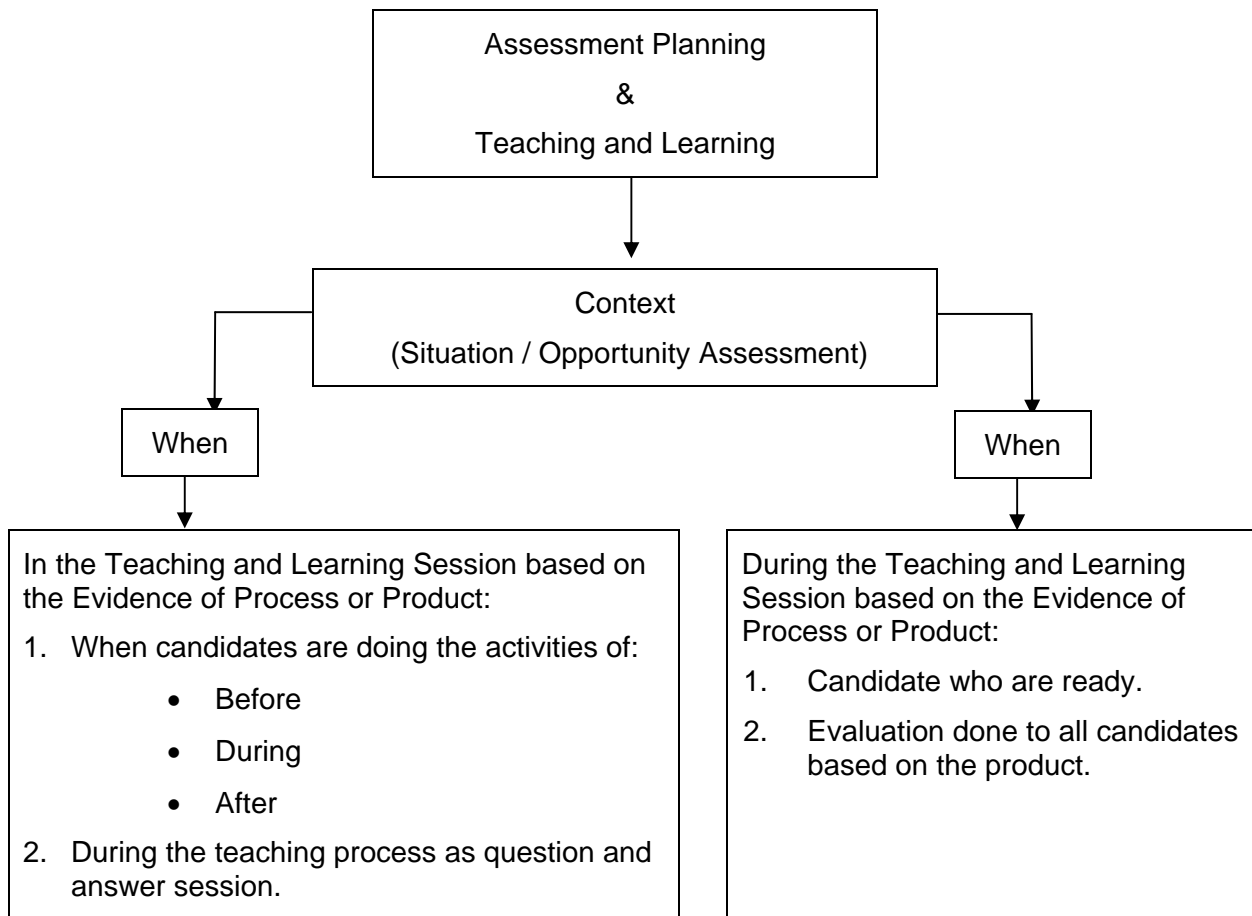
#### **13.1.1 Planning the implementation of the evaluation and assessment for coursework of ICT**

Assessor must plan on getting the chance to assess an aspect to a group or the whole candidates in a session of teaching and learning process by taking into consideration the objective(s) to be achieved in that session.

These are the steps on how an assessor will plan the assessment to be carried out during teaching and learning process in the classroom

- |        |   |
|--------|---|
| Step 1 | Choose a construct that is going to be assessed during teaching and learning process, that of an identified aspect. |
| Step 2 | Specify the criteria the quality of the candidate's achievement on the aspects.                                     |
| Step 3 | Evaluate based on the evidence on the candidates' achievement for the certain aspect.                               |
| Step 4 | Provide the score based on the marking scheme.  |

### 13.1.2 Organizing the Implementation of Course Work Assessment for ICT



### 13.1.3 Implementing the Assessment of Course Work for ICT;

- Giving Score

Assessor will award scores for each assessed aspects based on score scheme. The score scheme is precisely for the specified criteria of each aspect. Score for each aspect is summarized as 2, 1 and 0.

- Recording Score

During the assessment, assessor will record the score for candidates in the Individual Scoring Form (ISF).

## **13.2 General Administration**

Course Work Assessment for the ICT is parallel with the Teaching and Learning Module designed by the Curriculum Development Centre.

- 13.2.1 Malaysia Examinations Syndicate has prepared the Course Work Assessment Document for the ICT that enable the assessor to assess the candidate.
- 13.2.2 Each assessor is given one copy of Course Work Assessment Document that consists of detailed assessment for the course work of ICT.
- 13.2.3 Each candidate will be informed on the course work of ICT in terms of the assessed construct, criteria and aspects. Candidate is required to receive the list of aspects, criteria and score scheme as for enable them to know what is being assessed and plan their practical work/ activities.
- 13.2.4 Assessor is required to have a well-planned teaching plan from the beginning of the year. This teaching plan is included in the Work Schedule of Course Work Assessment for the ICT.
- 13.2.5 Teacher has to make sure for transferred and attached candidate:
- 13.2.6 Go on with the Course Work Assessment for the ICT in the new school that offers the subject within a period of time.
- 13.2.7 Provide the Principal with the assessment document.
- 13.2.8 Candidate who is not well and unable to complete the Course Work Assessment for the ICT is required to apply a special consideration of exemption for the assessment by presenting the related document such as endorsement letter from the doctor directed to Malaysia Examinations Syndicate through the principal.

### **13.3 Administration of Recording Assessment**

- 13.3.1 Recorded assessment for each candidate has to be done in the Individual Scoring Form. The school has to make ample copy for the usage of the subject teacher.
- 13.3.2 Assessor has to write the date and task together with the score received by the candidate for each aspects. Scoring is done based on the mark scheme.
- 13.3.3 Assessor who carries out the assessment in school has to validate that the score in the Individual Scoring Form is correct by signing the form. All the scores will be transferred to the Overall Scoring Form and this form will be sent to Malaysia Examinations Syndicate.
- 13.3.4 Principal is required to check and validate that the scoring on the Overall Scoring Form is correct by signing the form and sending it to Malaysia Examinations Syndicate.
- 13.3.5 Copy of the completed Individual Scoring Form has to be compiled and kept by the school together with the candidate's evidence as for coordination and validation purposes.

### **13.4 Task and Responsibility of the Principal**

- 13.4.1 The school is required to prepare all the utilities for implementing the Course Work Assessment for ICT. This includes preparing the required things and substance.
- 13.4.2 Principal has to make sure teachers carry out the assessment by following the rules given for the Course Work Assessment. Schools with more than a teacher teaching the subject are allowed to carry out the assessment together in order to achieve coordination.

### **13.5 Task and Responsibility of Assessor / Internal Assessor**

- 13.5.1 Teacher is required to make sure that the candidate receives the list of criteria and mark scheme.
- 13.5.2 Teacher guides and teaches the candidate before he carries out the task of the course work.
- 13.5.3 Teacher has to assess the candidate based on the provided mark scheme.

13.5.4 Teacher has to make sure that all candidates have been assessed and recorded assessment is done precisely, correctly and complete.

13.5.5 Teacher is responsible in administering and recording the assessment for the transferable, attached and sick candidate.

13.5.6 Teacher is required to cooperate with the coordinator or examination's inspector and able to follow instructions from time to time.

### **13.6 Task and Responsibility of the Candidate**

13.6.1 Candidate who register for the ICT at school level.

13.6.2 Each candidate has to understand the aspects that will be assessed.

13.6.3 Candidate has to make sure that all the aspects are assessed before 01 July the examination year.

13.6.4 Candidate has to make sure that the chance to assess is ample and always discuss with teacher about his achievement in certain aspects.

13.6.5 Candidate has to keep properly all the evidence in a file for The Course Work Assessment purposes.

### **13.7 Task and Responsibility of the Coordinator;**

13.7.1 Visit the schools for coordination purposes and instructions according to the rules and procedures of Malaysia Examinations Syndicate.

13.7.2 Carry out the coordination for coordinating the score given by the assessor.

### **13.8 Task and responsibility of the Examination's Inspector**

13.8.1 The inspection can be done by Malaysia Examinations Syndicate's officer, State Curriculum Officer or authorized party elected by Malaysia Education Ministry.

13.8.2 Examination's Inspector has to make sure that the school has implemented the Course Work Assessment and it is done according to the school-based assessment as given in the Course Work Assessment Guide.

13.8.3 Examination's Inspector is allowed to use assessment instrument like check list, interview and others to retrieve information on the implementation of the

assessment. Evidence from the candidate can be used to show the implementation of this assessment.

13.8.4 Examination's Inspector will process the information provided by the instrument, summarize and recommend it certain party based on its role in the Course Work Assessment.

### **13.9 Task and Responsibility of the State Education Department**

13.9.1 State Education Department is responsible to distribute the Course Work Assessment Guide to the related schools.

13.9.2 State Education Department together with Malaysia Examinations Syndicate are responsible to elect coordinator to coordinate the course work in their respective state. Election is only from the teachers who are experienced in the subject matter.

13.9.3 State Education Department has to give briefing concerning the coordination of the course work.

13.9.4 State Education Department has to collect the Batch Assessment Form (BSF) and send it to Malaysia Examinations Syndicate according to the date given.

**SECTION D**  
**SCORING**



## 14.0 SCORING SYSTEM

School based assessment - each aspect will be given a score of 2, 1, or 0.

The score will be sum up to report candidates' performance in each module.

Score	Representation
2	Achieve Aspect Benchmark
1	Below Aspect Benchmark
0	Omit (little or no evidence, or not relevant)

The final score will be collected from school at the end of July of the examination year. The school will be notified on the method and medium through JPN.

# **APPENDICES**



**LEMBAGA PEPERIKSAAN  
KEMENTERIAN PELAJARAN MALAYSIA**

**INFORMATION AND COMMUNICATION TECHNOLOGY  
3765/2**

**SIJIL PELAJARAN MALAYSIA**

**YEAR: .....**

**COURSEWORK PORTFOLIO**

Name of School	
Name of Candidate	
Identity Card Number	
Index Number	

**COURSEWORK PORTFOLIO CONSISTS OF:****Learning Area 1**

- TOC.CW.LA1.S01.1
- ACF.CW.LA1.S01.1
- TOC.CW.LA1.S01.2
- ACF.CW.LA1.S01.2
- TOC.CW.LA1.S02.1
- ACF.CW.LA1.S02.1

**Learning Area 2**

- TOC.CW.LA2.S03.1
- ACF.CW.LA2.S03.1
- TOC.CW.LA2.S04.1
- ACF.CW.LA2.S04.1
- TOC.CW.LA2.S05.1
- WAF.CW.LA2.S05.1
- ACF.CW.LA2.S05.1

**Learning Area 3**

- TOC.CW.LA3.S06.1
- ACF.CW.LA3.S06.1
- TOC.CW.LA3.S06.2
- ACF.CW.LA3.S06.2
- TOC.CW.LA3.S07.1
- WAF.CW.LA3.S07.1
- ACF.CW.LA3.S07.1

#### **Learning Area 4**

- TOC.CW.LA4.S08.1
- RF.CW.LA4.S08.1
- ACF.CW.LA4.S08.1
- TOC.CW.LA4.S09.1
- RF.CW.LA4.S09.1
- ACF.CW.LA4.S09.1

#### **Learning Area 5**

- TOC.CW.LA5.S10.1
- RF.CW.LA5.S10.1
- ACF.CW.LA5.S10.1
- TOC.CW.LA5.S11.1
- RF.CW.LA5.S11.1
- ACF.CW.LA5.S11.1

#### **Learning Area 6**

- TOC.CW.LA6.S12.1
- RF.CW.LA6.S12.1
- ACF.CW.LA6.S12.1
- TOC.CW.LA6.S13.1
- RF.CW.LA6.S13.1
- ACF.CW.LA6.S13.1



**LEMBAGA PEPERIKSAAN  
KEMENTERIAN PELAJARAN MALAYSIA**

**INDIVIDUAL SCORE FORM**

**INFORMATION AND COMMUNICATION TECHNOLOGY**

YEAR \_\_\_\_\_

**RECORD OF SUBMISSION**

Name of Candidate	
Identity Card Number	
Index Number	

Date of Submission/ Assessment	Construct Code	Aspect Code	Signature		Remarks
			Candidate	Assessor	



**LEMBAGA PEPERIKSAAN  
KEMENTERIAN PELAJARAN MALAYSIA**

**INDIVIDUAL SCORE FORM**

**INFORMATION AND COMMUNICATION TECHNOLOGY**

**YEAR** \_\_\_\_\_

Name of Candidate	
Identity Card Number	
Index Number	

Code	Aspect	Score	Remarks
LA1.S01.1	Apply correct security procedures using antivirus		
LA1.S01.2	Apply correct security procedures using anti-spy ware		
LA1.S02.1	Locate and present information on impact of ICT and society		
LA2.S03.1	Assemble the components of a PC correctly		
LA2.S04.1	Install operating system, application software and utility programs		
LA2.S05.1	Explain the latest open source software available and the latest development in ICT		
LA3.S06.1	Crimp and test UTP cable		
LA3.S06.2	Configure and test network connection		
LA3.S07.1	Explain the latest development in networks and communications		
LA4.S08.1	Apply all the phases of multimedia production to produce an interactive educational multimedia project		
LA4.S09.1	Gather examples of immersive multimedia in education, business or entertainment		
LA5.S10.1	Apply program development phases to develop a problem-solving program		
LA5.S11.1	Collect information on the latest programming languages		
LA6.S12.1	Develop a database project		
LA6.S13.1	Find out current developments in computer information systems		
<b>TOTAL SCORE</b>			

**VERIFICATION**

Assessor's Signature

Internal Verifier's Signature

External Verifier's Signature

-----  
Name :  
Date :

-----  
Name :  
Date :

-----  
Name :  
Date :



BSF

**LEMBAGA PEPERIKSAAN  
KEMENTERIAN PELAJARAN MALAYSIA**

**BATCH SCORE FORM**

**INFORMATION AND COMMUNICATION TECHNOLOGY**

**CENTRE CODE:** \_\_\_\_\_

**SCHOOL CODE:** \_\_\_\_\_

**YEAR:** \_\_\_\_\_

No	Index Number	Identity Card Number	Name	LA1	LA2	LA3	LA4	LA5	LA6	Score
1.		- -								
2.		- -								
3.		- -								
4.		- -								
5.		- -								
6.		- -								
7.		- -								
8.		- -								
9.										
10.										

**Assessor's Declaration**

**Internal Verifier's Declaration**

This is to certify that the ICT coursework scores have been awarded in accordance with the requirements of the syllabus and that every reasonable step has been taken to ensure that the work presented is the candidate's own work.

I confirm that the assessor's declaration above is true.

Assessor's Signature

Internal Verifier's Signature

-----

-----

Name :

Name :

Date :

Date :

School's Official Stamp:

### Sample Questions LA5.S10.1

1. Indra Sdn. Bhd. is a company that manages the parking lots at Bukit Puteri Resort. Vehicles parked are charged based on the following :

a. 1 <sup>st</sup> half hour	:	RM0.20
b. 2 <sup>nd</sup> half hour	:	RM0.50
c. subsequent half hour	:	RM0.80

To improve the efficiency at the payment counters, you are asked by Indra Sdn Bhd to develop a program to calculate the total parking charges based on the time of entry and time of departure of each vehicle.

2. Happy Supermarket will be holding an annual sale in two-month time. Discount will be given to customers based on the amount they spent. The discount is as given in the following table.

Amount Spent (RM)	Entitled Discount
100 to 200	5 %
More than 200 to 400	10 %
More than 400	15 %

Table 1

Your task is to build a program to calculate the amount of money the customer has to pay after discount. The program will display the amount spent by the customer, percentage discount given, the actual discount and the amount to be paid.

3. A book salesman at Syarikat Blue East will receive a basic pay of RM500.00 per month. Based on the sale, they will get commission on number of books sold. The commission is based on Table 2:

Number of books sold	Commission (RM) per book
200 and below	
• First 100 books	0.20
• Subsequent 100 books	0.30
More than 200	0.35

Table 2

According to the number of book sold, you are request to develop a program to calculate the salary for each salesman.

4. Write a simple program to calculate the area of a triangle. Your program should allow the user to key in the length and height of the triangle. Use a formula to calculate and display the area of the triangle.
5. Write a simple program to calculate the area of a circle. Your program should allow the user to key in the radius of the circle. Use a formula to calculate and display the area of the circle.
6. Write a simple program to calculate the area of a rectangle. Your program should allow the user to key in the length and width of the rectangle. Use a formula to calculate and display the area of the rectangle.

7. Write a simple program to calculate the volume of a pyramid. Your program should allow the user to key in the length, width and height of the pyramid. Use a formula to calculate and display the volume of the pyramid.
8. Write a simple program to calculate the volume of a sphere. Your program should allow the user to key in the radius of the sphere. Use a formula to calculate and display the volume of the sphere.
9. Write a simple program to calculate the volume of a cuboids. Your program should allow the user to key in the length, width and height of the cuboids. Use a formula to calculate and display the volume of the cuboids.
10. Write a program to find the total and average of three numbers.
11. Write a program to find the total, difference and average of two numbers.
12. Write a program to calculate the price of an item after discount. The user will key in the price and percentage discount. The program will calculate and display the discount given and the actual amount to be paid.
13. Write a program to calculate the price of an item after discount. The user will key in the price and percentage discount. The program will calculate and display the actual amount to be paid.
14. Write a program to calculate the body mass index (BMI). The user will key in the weight and height of a person. The program will display the BMI and whether the person is underweight, normal, overweight or obese.
15. Write a program to calculate the body mass index (BMI). The user will key in the weight and height of a person. The program will display the BMI.
16. Write a program to allow a user to guess a hidden number by entering any number. The program will inform the user if the number entered is greater than, less than or equals to the hidden number.

### Sample Questions LA6.S12.1

#### **SITUATION 1**

Pn. Saripah has problem in preparing a list of students who are taking part in the sports day events based on their houses and age categories. As an ICT student, you are asked by Pn. Saripah to develop an Annual Sports Day Information System (ASDIS) to assist her in preparing the list.

In the system, you are required to:

- (a) create a database that consist of two tables, namely table STUDENT and table SPORTS\_HOUSE. The database should store student ID, name, gender, sports house and age category.
- (b) enter at least four sports houses into the HOUSE table.
- (c) enter at least two participants' data for each age category of different houses.
- (d) create a query that links the two tables.
- (e) create a form based on the query in (d). The form must show the title given and descriptive labels.
- (f) create a report based on the query in (d). The report must show the participants for each category of different sports houses.

Complete the RF.CW.LA6.S12.1 form. Submit the RF.CW.LA6.S12.1 form and the soft copy of the information system to your teacher at the end of the assessment session.

#### **SITUATION 2**

The form teachers of your school are required to submit a report on the monthly test results of each student to the school administration. As an ICT student, you are asked to develop a Test Marks Information System (TMIS) to assist the teachers in recording the subject marks obtained by each student. TIMS should generate a report to show the subject marks, total marks and average marks of the students from each class.

In the system, you are required to:

- (a) create a database that consist of two tables, namely table STUDENT and table CLASS. The database should store student ID, name, class, form teacher and marks for each subject taken.
- (b) enter at least four classes into the CLASS table.
- (c) enter at least two students' data for each class.
- (d) create a query that links the two tables. The query should be able to calculate the total marks and average marks for each student automatically.
- (e) create a form based on the query in (d). The form must show the title given and descriptive labels.
- (f) create a report based on the query in (d). The report must show the subject marks, total marks and average marks of the students from each class.

Complete the RF.CW.LA6.S12.1 form. Submit the RF.CW.LA6.S12.1 form and the soft copy of the information system to your teacher at the end of the assessment session.

**SITUATION 3**

Bestari Computer Center (BCC) deals with computer sales and services. The BCC owner faces difficulties in tracking its business services. You are asked to help the owner to develop a computerized management system called Bestari Information System (BIS).

In the system, you are required to:

- (a) create a database that consist of two tables, namely table CUSTOMER and table SERVICE The database should store customer ID, customer name, customer address, customer telephone number, date of service, description of service.
- (b) enter at least four records into the CUSTOMER table.
- (c) enter at least six records into the SERVICE table.
- (d) create a query that links the two tables.
- (e) create a form based on the query in (d). The form must show the title given and descriptive labels.
- (f) create a report based on the query in (d). The report must show the service record for each customer.

Complete the RF.CW.LA6.S12.1 form. Submit the RF.CW.LA6.S12.1 form and the soft copy of the information system to your teacher at the end of the assessment session.



**LEMBAGA PEPERIKSAAN  
KEMENTERIAN PELAJARAN MALAYSIA**

**ASSESSMENT CHECKLIST FORM**

LEARNING AREA : **COMPUTER SYSTEM**

Name of Candidate	Siti Sarah Bt Ismail
IC No	900101-07-5442
Index No	

**Construct** : S04 Software Installation  
**Aspect** : S04.1 Install an operating system, application software and utility programs  
**Type of Instrument** : Demonstration  
**Assessment** : 1 / 2 / 3 / \_

No.	Criterion	Evidence (to be completed by candidate)	TICK (✓) IF COMPLETED	Remarks
1.	Install operating software.			
2.	Install application software.	MS Office	✓	
3.	Install utility program.	WinZip	✓	
<b>SCORE</b>			<b>1</b>	

Candidate's Signature

Assessor's Signature

-----

-----

Name : Salmah Bt Ahmad

Date : 01/05/06



**LEMBAGA PEPERIKSAAN  
KEMENTERIAN PELAJARAN MALAYSIA**

**ASSESSMENT CHECKLIST FORM**

LEARNING AREA : **COMPUTER SYSTEM**

Name of Candidate	Siti Sarah Bt Ismail
IC No	900101-07-5442
Index No	

**Construct** : S04 Software Installation  
**Aspect** : S04.1 Install an operating system, application software and utility programs  
**Type of Instrument** : Demonstration  
**Assessment** : 1/2 3 / \_

No.	Criterion	Evidence (to be completed by candidate)	TICK (✓) IF COMPLETED	Remarks
4.	Install operating software.	Windows XP	✓	
5.	Install application software.	MS Office	✓	Completed during Assessment 1
6.	Install utility program.	WinZip	✓	Completed during Assessment 1
<b>SCORE</b>			<b>2</b>	

Candidate's Signature

Assessor's Signature

-----

-----

Name : Salmah Bt Ahmad

Date : 10/05/06